

TECHLAM

by **LEVANTINA**

SINTERED STONE

YEARBOOK 2024

HONG KONG

ASIA BRANCH

TECHLAM
UNLIMITED & AMAZING

index

03 - 06

TECHLAM®

About TECHLAM
03

07 - 12

Colour gallery

All items
07

13 - 110

Collections

01.
Pure
13

02.
Cement
17

03.
Stone
27

04.
Industrial
41

05.
Marble
57

06.
Iconic
95

07.
Countertop items
111

127 - 134

Under project

Items under request
127

135 - 140

Project Gallery

Façades
references
135

141 - 148

Technical

Technical info.
Characteristics &
packing list
141

TECHLAM Green.
Sustainability
147

What is Techlam?

Techlam is a benchmark brand within the Levantina Group umbrella and is one of the leading brands of sintered stone globally. It has been the pioneer brand in Spain since 2007.

Levantina Group has been a global market leader in the stone sector since 1959, controlling the entire supply chain (from extraction to final distribution), through different products, business models and distribution channels.

Techlam is a high-end sintered stone with unlimited possibilities, and hypnotic and inspiring natural beauty. Unlimited & Amazing.

Techlam's Purpose, Mission, Vision and Values

Purpose

To improve the lives of communities, building a sustainable future by creating unique spaces with unparalleled natural beauty, thanks to the unlimited possibilities offered by our sintered stone.

Mission

Offer a Universe of Unlimited Possibilities, full of beauty and inspiration, for creating unique and hypnotic indoor and outdoor spaces, through its high-end, versatile and sustainable sintered stone surfaces.

Vision

Be the leading brand in sintered stone, recognised for our pioneering and cutting-edge character, and set the benchmark in trends and the creation of the most beautiful, exclusive and innovative designs, thanks to our expertise in natural stone craftsmanship.

Techlam's Values

- Sustainability
- Innovation
- Quality
- Passion



Techlam, The High End Sintered Stone, attributes and applications

Techlam is the leading specialist in sintered stone, and has been a pioneer in Spain since 2007:

- It manufactures all formats that can be found on the market, from 3 mm to 20 mm (3 mm, 5 mm, 6 mm, 12 mm and 20 mm).
- It produces slabs for the naval industry, furniture, façades, cladding and interior floors, as well as kitchen and bathroom countertops
- Thanks to the evolution of the technology used, we can work with a range of colours and graphics, which allows us to develop an infinite variety of designs.
- In addition, the body of the sintered stone slab offers design possibilities for the different clays.



Techlam Sintered stone attributes



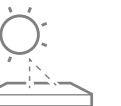
Waterproof qualities



Hygienic surfaces



Easy cleaning



UV resistant



Heat resistant



Suitable for food contact



Environmental-friendly



Recyclable



*Stain-resistant



*Chemical product resistant



Unalterable colours



Hardness



*Scratch Resistant



Light weight

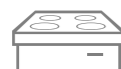


Bacteriostatic

Applications for sintered stone Techlam



Indoor walls



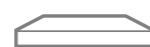
Countertops



Outdoor floors



Furniture



Indoor floors



Outdoor facades and surfaces

Finishes, formats & thickness



Matt

With high technical and aesthetic features, our matt finish gives the surface a natural look that is designed to resist daily wear and tear, stains and atmospheric conditions.



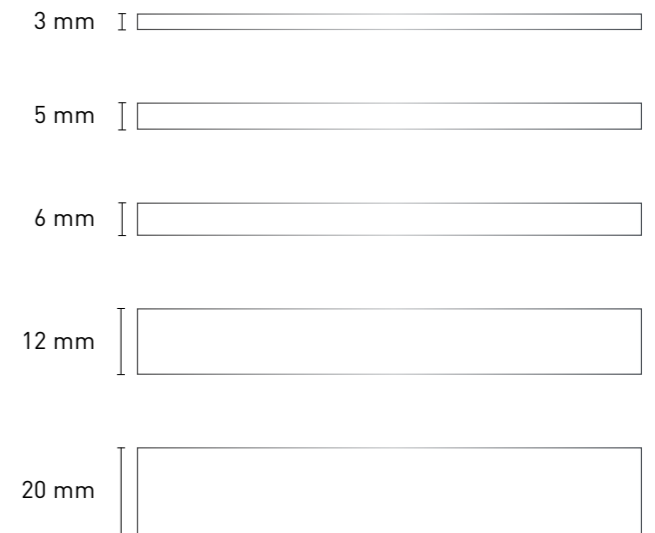
3D Carving

This finish provides a subtle raised print that can be seen when the light shines upon the surface. Our technology provides naturalness, creating truly realistic optical effects.



Slate

The roughness of hewn stone comes out as a perfect solution for flooring and extra touch of decoration.



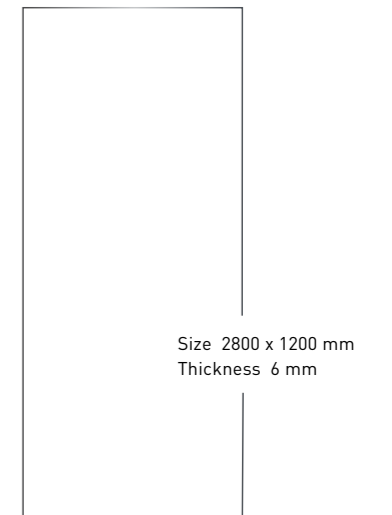
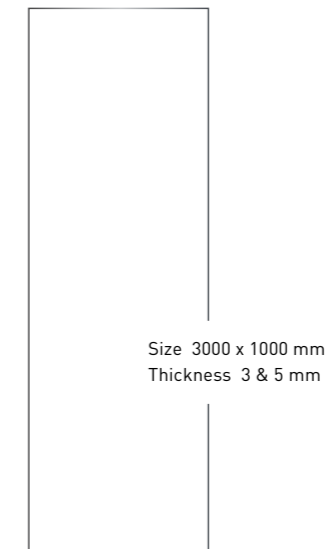
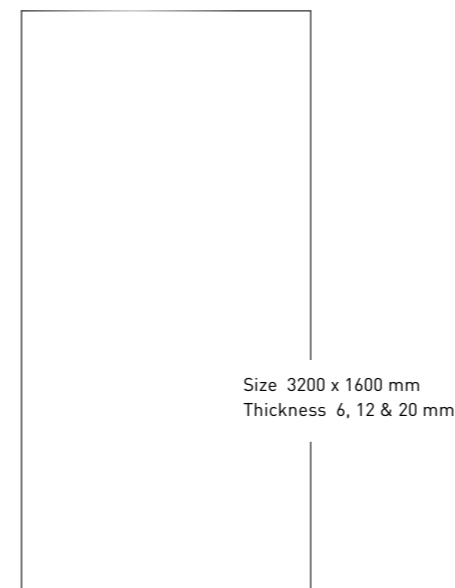
Polished

Our polish method enhances the surface of each piece by bestowing it brightness, radiance and deepness. This finish expresses the beauty and elegance of the more prestigious materials, generating perfect aesthetics whilst maintaining extremely high technical features



Bush Hammered

A revolutionary finish in the ceramic sector which texture maximises the non-slip properties of Techlam. Adds depth and character to the piece.



2024 *sintered stone surfaces*
COLLECTION GALLERY

TECHLAM arrives with a new collection exceeding all expectations.
 New exclusive designs hand in hand with the most advanced technology.



Pure Ice
 PURE COLLECTION
 Polished - 6, 12 & 20 mm
 Matt - 3, 5, 6, 12 & 20 mm



Pure Black
 PURE COLLECTION
 Matt - 3, 5, 6, 12 & 20 mm



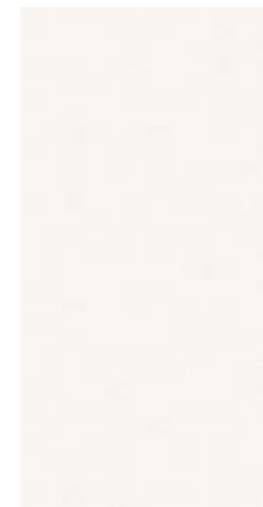
Pure Antracita
 PURE COLLECTION
 Matt - 3 & 5 mm



Pure Bone
 PURE COLLECTION
 Matt - 3 & 5 mm



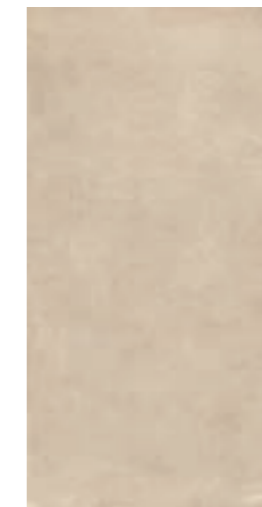
Pure Coal
 PURE COLLECTION
 Matt - 3 & 5 mm



Pure Neu
 PURE COLLECTION
 Matt - 3 & 5 mm



Tambora
 CEMENT COLLECTION
 Matt - 3, 5, 6, 12 & 20 mm



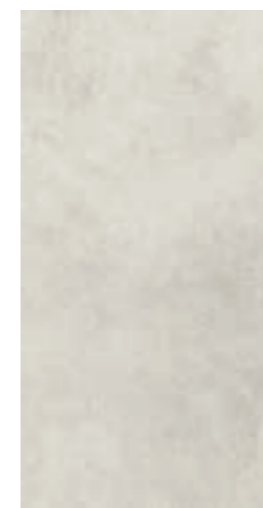
Thar
 CEMENT COLLECTION
 Matt - 3, 5, 6, 12 & 20 mm



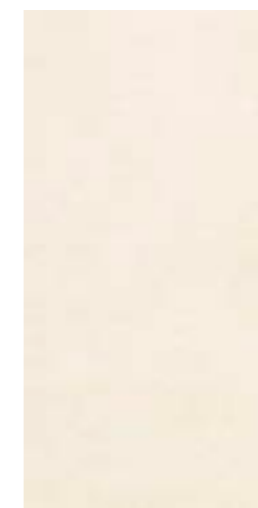
Thundra
 CEMENT COLLECTION
 Matt - 3, 5, 6, 12 & 20 mm



Tesa
 CEMENT COLLECTION
 Matt - 3, 5, 6, 12 & 20 mm



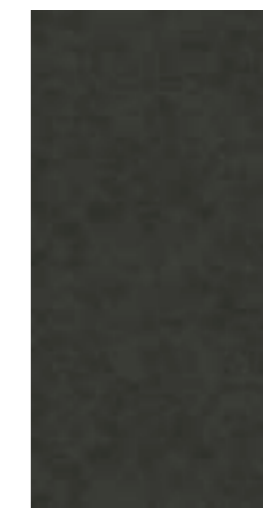
Hydra Argen
 CEMENT COLLECTION
 Matt - 3 & 5 mm



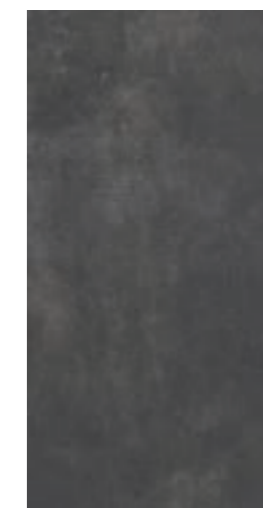
Hydra Beige
 CEMENT COLLECTION
 Matt - 3 & 5 mm



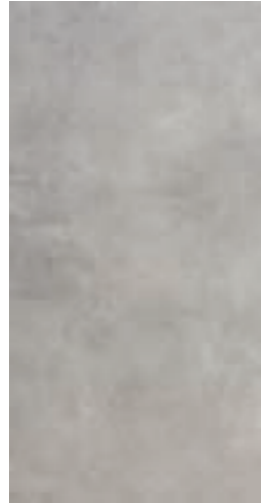
Vulcano Ceniza
 CEMENT COLLECTION
 Matt - 3 & 5 mm



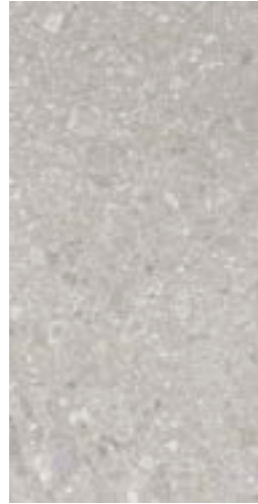
Vulcano Coal
 CEMENT COLLECTION
 Matt - 3 & 5 mm



Vulcano Roca
 CEMENT COLLECTION
 Matt - 3 & 5 mm



Vulcano Concrete
CEMENT COLLECTION
Matt - 3 & 5 mm



Ceppo
INDUSTRIAL COLLECTION
3D Carving - 6 & 12 mm



Legno
INDUSTRIAL COLLECTION
3D Carving - 6, 12 & 20 mm



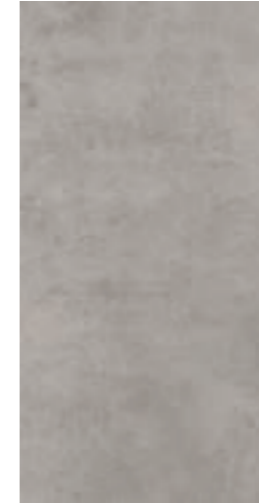
Reggio
INDUSTRIAL COLLECTION
Matt - 3, 5, 6, 12 & 20 mm
Bush Hammered - 3 & 5 mm



Rust Corten
INDUSTRIAL COLLECTION
Matt - 3, 5, 6, 12 & 20 mm
Bush Hammered - 3 & 5 mm



Tektonika
INDUSTRIAL COLLECTION
Matt - 3 & 5 mm



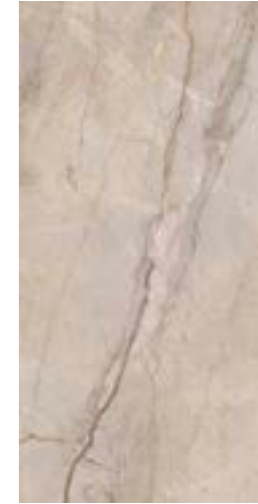
Urban
INDUSTRIAL COLLECTION
Bush Hammered - 3 & 5 mm



Zahir Perle
INDUSTRIAL COLLECTION
Matt - 3 & 5 mm



Ardesia Nero
STONE COLLECTION
Matt - 6, 12 & 20 mm



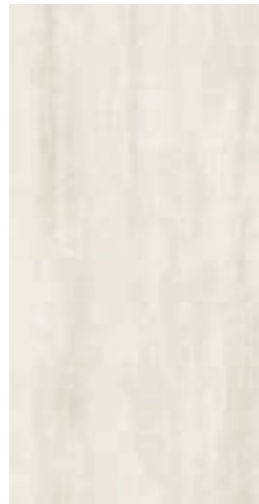
Breccia Brown
STONE COLLECTION
3D Carving - 6, 12 & 20 mm



Rust Iron
INDUSTRIAL COLLECTION
Matt - 3, 5, 6, 12 & 20 mm



Blaze Dark
INDUSTRIAL COLLECTION
Matt - 3 & 5 mm



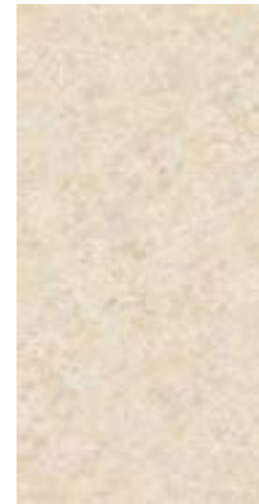
Blaze Snow
INDUSTRIAL COLLECTION
Matt - 3 & 5 mm



Bloomcore
INDUSTRIAL COLLECTION
3D Carving - 3 mm



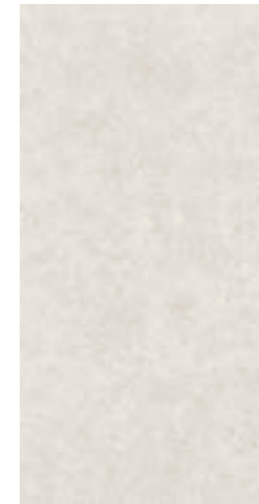
Rust Cooper
INDUSTRIAL COLLECTION
Matt - 3 & 5 mm



Coralina
STONE COLLECTION
3D Carving - 6 & 12 mm



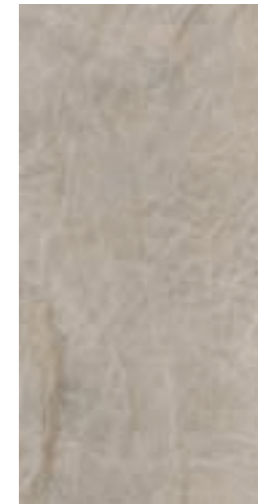
Cosmopolitan Black
STONE COLLECTION
Matt - 3, 5, 6 & 12 mm



Limestone
STONE COLLECTION
Matt - 3 & 5 mm
3D Carving - 6, 12 & 20 mm
Bush Hammered - 3 & 5 mm



Pierre Bleue
STONE COLLECTION
Matt - 3 & 5 mm
3D Carving - 6, 12 & 20 mm
Bush Hammered - 3 & 5 mm



Quartzite Stone
STONE COLLECTION
Polished - 6, 12 & 20 mm
Matt - 6, 12 & 20 mm



Steel Chrome
INDUSTRIAL COLLECTION
Matt - 3 & 5 mm



Steel Corten
INDUSTRIAL COLLECTION
Matt - 3 & 5 mm



Steel Dark
INDUSTRIAL COLLECTION
Matt - 3 & 5 mm



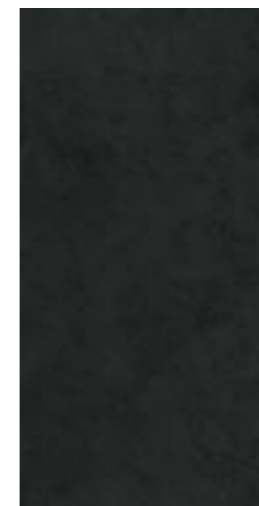
Steel Marine
INDUSTRIAL COLLECTION
Matt - 3 & 5 mm



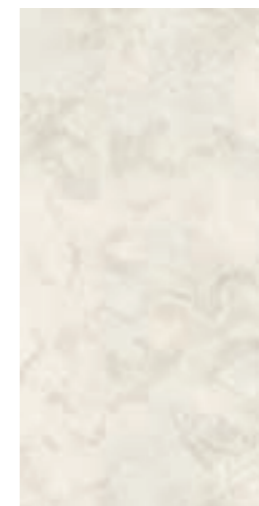
Steel White
INDUSTRIAL COLLECTION
Matt - 3 & 5 mm



Basalt Black
STONE COLLECTION
Matt - 3, 5, 6, 12 & 20 mm



Opium Black
STONE COLLECTION
Slate - 5 mm



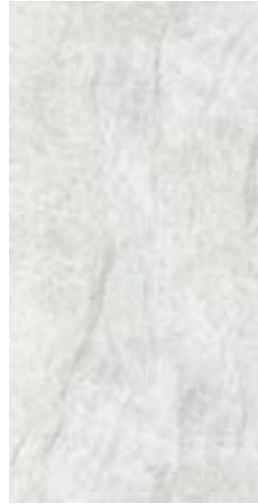
Slate Ivory
STONE COLLECTION
Slate - 5 mm



Strattos
STONE COLLECTION
Matt - 3 & 5 mm
Bush Hammered - 3 & 5 mm



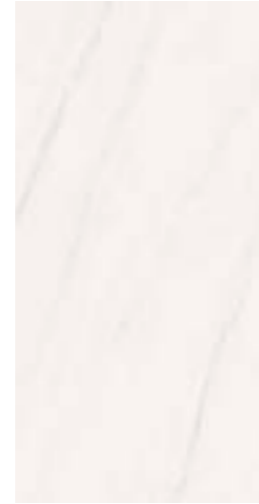
Travertino Pearl
STONE COLLECTION
Matt - 3, 5, 6, 12 & 20 mm
3D Carving - 6, 12 & 20 mm
Bush Hammered - 3 & 5 mm



Taj Mahal
MARBLE COLLECTION
Matt - 6, 12 & 20 mm
Polished - 6, 12 & 20 mm



Ártico
MARBLE COLLECTION
Matt - 6, 12 & 20 mm
Polished - 6, 12 & 20 mm



Bianco Lasa
MARBLE COLLECTION
Matt - 3, 5, 6, 12 & 20 mm
Polished - 6, 12 & 20 mm



Milos Bianco
MARBLE COLLECTION
Matt - 6 mm
Polished - 6 mm



Kalos Bianco
MARBLE COLLECTION
Matt - 3, 5, 6, 12 & 20 mm
Polished - 6, 12 & 20 mm



Macchia Gold
MARBLE COLLECTION
Matt - 3, 5, 6, 12 & 20 mm
Polished - 6, 12 & 20 mm



Marvel Gold
MARBLE COLLECTION
Matt - 3, 5, 6, 12 & 20 mm
Polished - 6, 12 & 20 mm



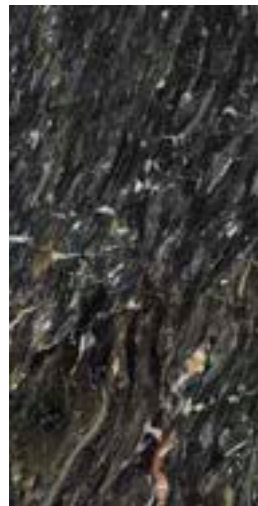
Montblanc
MARBLE COLLECTION
Matt - 6, 12 & 20 mm
Polished - 6, 12 & 20 mm



St. Laurent
MARBLE COLLECTION
Matt - 6, 12 & 20 mm



Supergrey
MARBLE COLLECTION
Matt - 6 & 12 mm
Polished - 6 & 12 mm



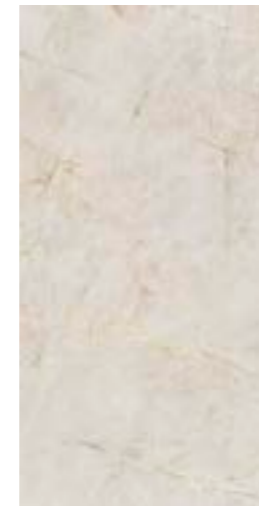
Blackfalls
MARBLE COLLECTION
Matt - 6 & 12 mm
Premium - 6 & 12 mm



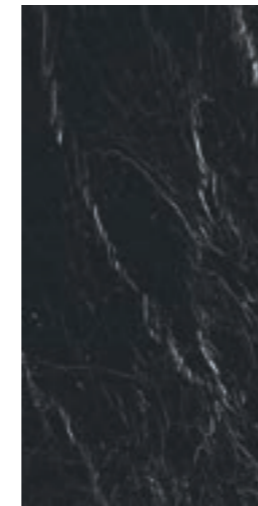
Bellagio
MARBLE COLLECTION
Matt - 6, 12 & 20 mm
Polished - 6, 12 & 20 mm



Calacatta White
MARBLE COLLECTION
Matt - 3, 5, 6, 12 & 20 mm
Polished - 6, 12 & 20 mm



Colossal Cream
MARBLE COLLECTION
Matt - 6, 12 & 20 mm
Polished - 6, 12 & 20 mm



Concerto
MARBLE COLLECTION
Matt - 6, 12 & 20 mm
Polished - 6, 12 & 20 mm



Tropical Green
MARBLE COLLECTION
Matt - 6 & 12 mm
Premium - 6 & 12 mm



Amazonia
ICONIC COLLECTION
Polished - 6 & 12 mm
3D Carving - 6 & 12 mm



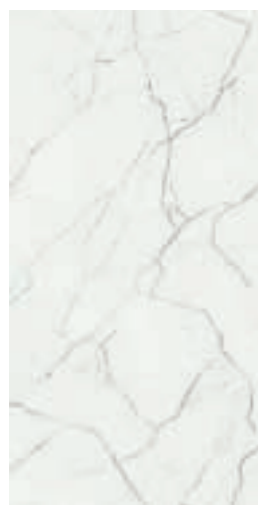
Arctic Blue
ICONIC COLLECTION
Matt - 6 & 12 mm
Polished - 6 & 12 mm



Forest
ICONIC COLLECTION
Matt - 6 & 12 mm
Polished - 6 & 12 mm



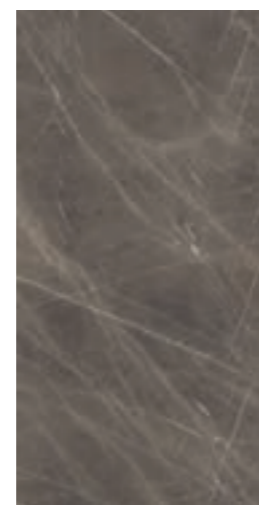
Nuvola
ICONIC COLLECTION
Matt - 6 & 12 mm
Polished - 6 & 12 mm



Crystallo
MARBLE COLLECTION
Matt - 6, 12 & 20 mm
Polished - 6, 12 & 20 mm



Essential Gold
MARBLE COLLECTION
Matt - 6, 12 & 20 mm
Polished - 6, 12 & 20 mm



Ferox
MARBLE COLLECTION
Matt - 6 & 12 mm
Polished - 6 & 12 mm



Fior di Bosco
MARBLE COLLECTION
Matt - 3, 5, 6, 12 & 20 mm



Kaledonia
MARBLE COLLECTION
Matt - 6 & 12 mm
Polished - 6 & 12 mm



Patagonia
ICONIC COLLECTION
Matt - 6 & 12 mm
Polished - 6 & 12 mm



Starlight
ICONIC COLLECTION
Matt - 6 & 12 mm
Polished - 6 & 12 mm

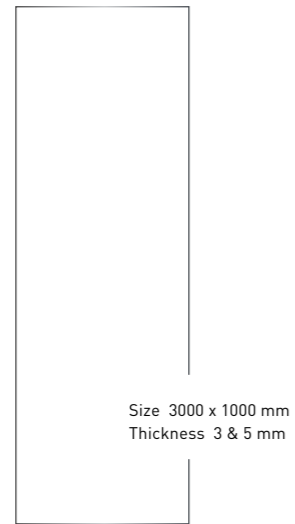
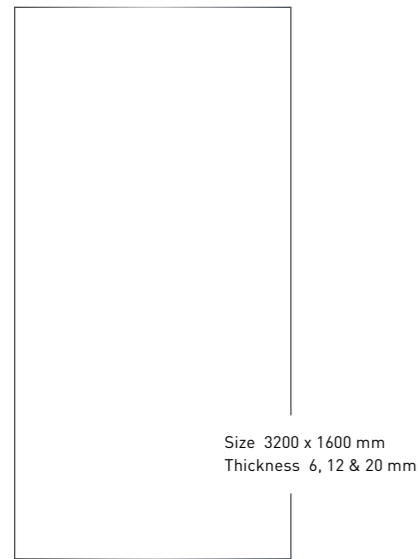


Onyx Serena
ICONIC COLLECTION
Matt - 6 & 12 mm
Polished - 6 & 12 mm

Pure *Collection*

The purest collection for the basics lovers, creating a canvas filled with the best properties. Collection based on lights and contrasts.





Pure Ice

Matt · 3, 5, 6, 12 & 20 mm
Polished · 6, 12 & 20 mm

Pure Neu

Matt · 3 & 5 mm

Pure Bone

Matt · 3 & 5 mm

Pure Coal

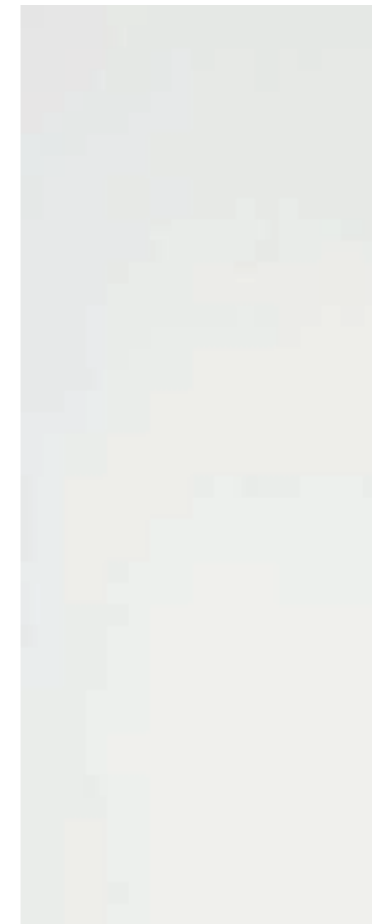
Matt · 3 & 5 mm

Pure Black

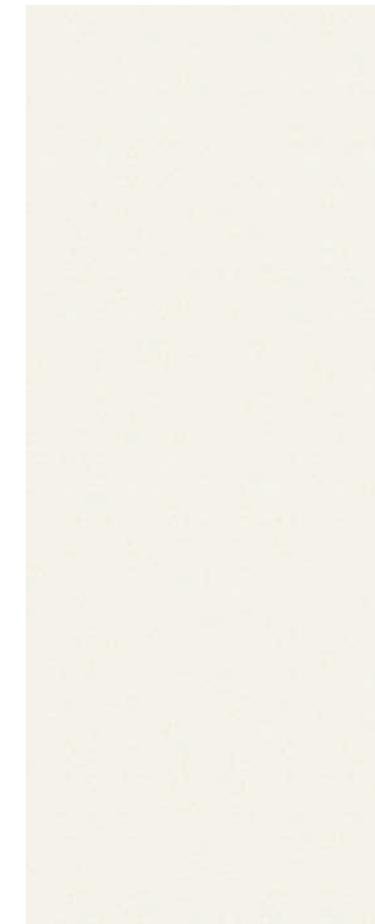
Matt · 3, 5, 6, 12 & 20 mm

Pure Antracita

Matt · 3 & 5 mm



PURE ICE



PURE NEU



PURE BONE



PURE ANTRACITA



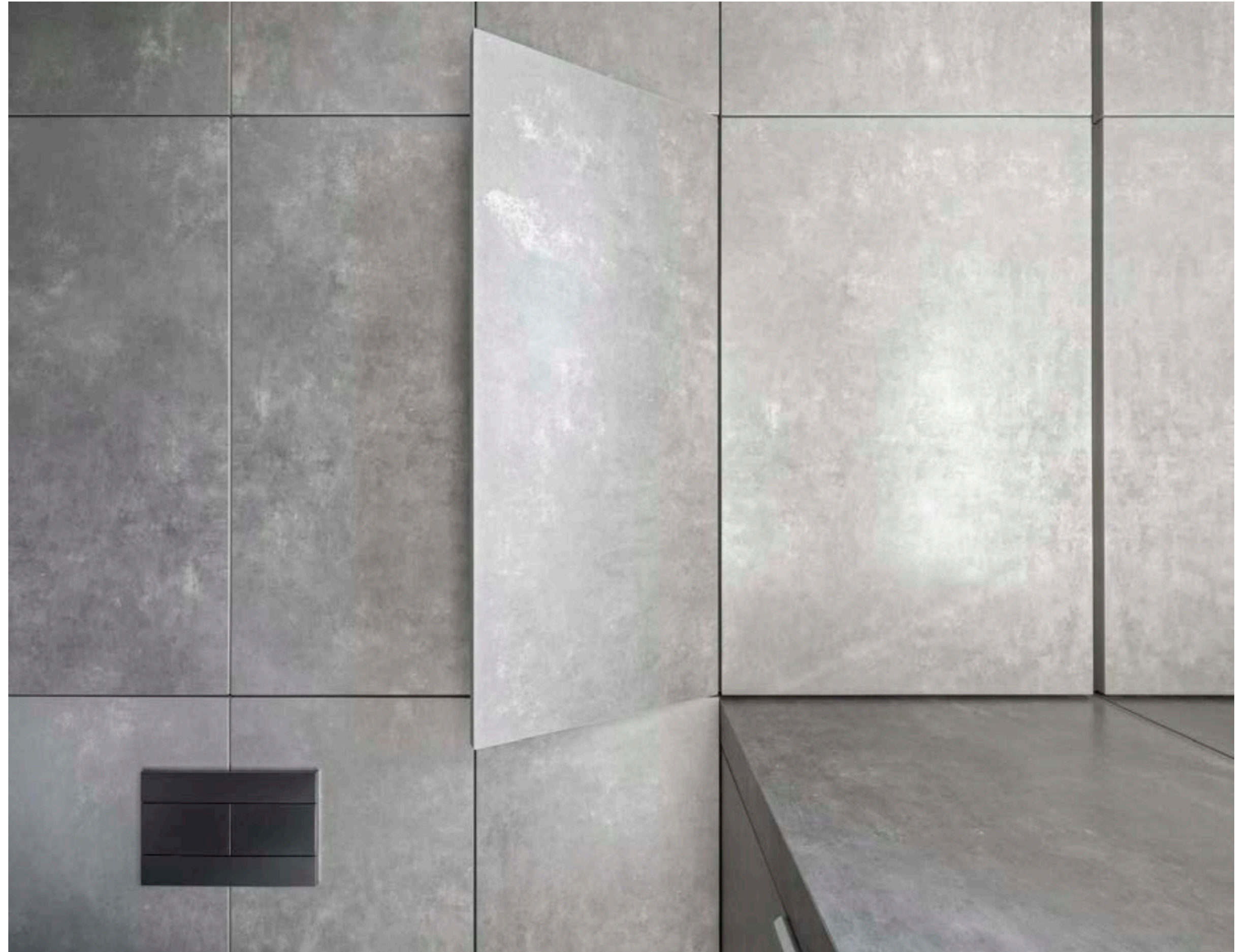
PURE COAL

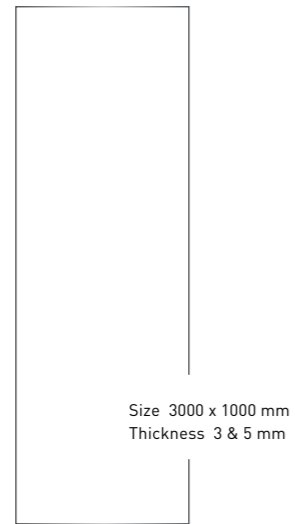
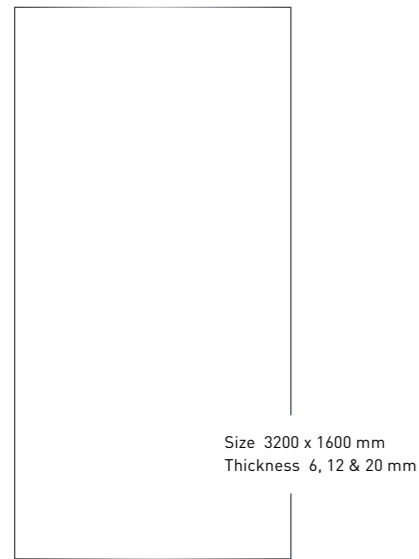


PURE BLACK

Cement *Collection*

Contemporary and natural looking spaces created through the subtle and harmonious items of this collection in neutral patterns.





Tesa

Matt · 3, 5, 6, 12 & 20 mm

Thar

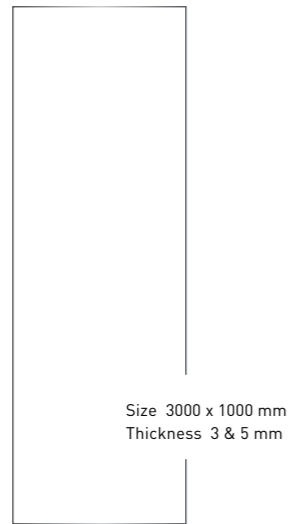
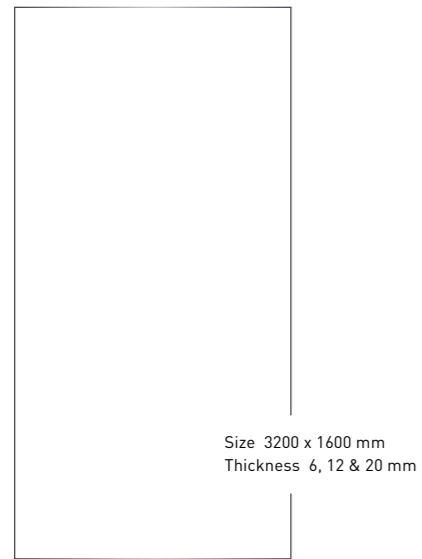
Matt · 3, 5, 6, 12 & 20 mm



TESA



THAR

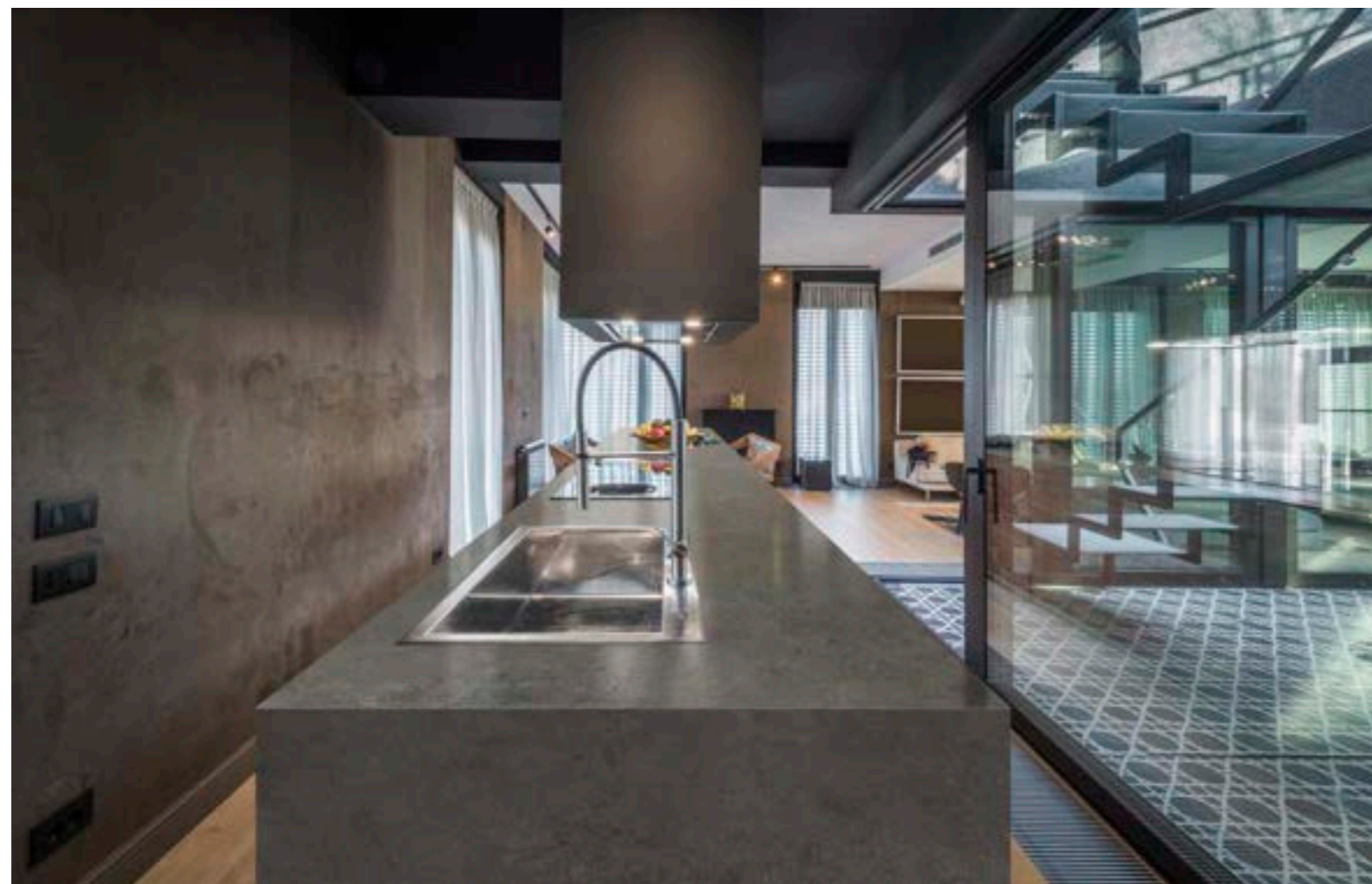


Thundra

Matt · 3, 5, 6, 12 & 20 mm

Tambora

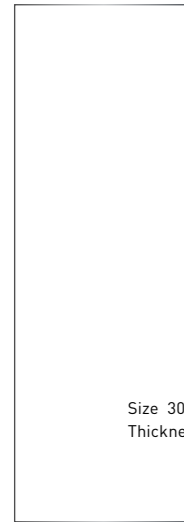
Matt · 3, 5, 6, 12 & 20 mm



THUNDRA



TAMBORA



Size 3000 x 1000 mm
Thickness 3 & 5 mm

Hydra Argen

Matt · 3 & 5 mm

Hydra Beige

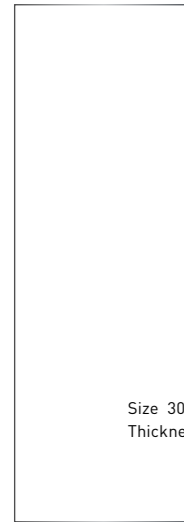
Matt · 3 & 5 mm



HYDRA ARGEN



HYDRA BEIGE



Size 3000 x 1000 mm
Thickness 3 & 5 mm

Vulcano Ceniza

Matt · 3 & 5 mm

Vulcano Concrete

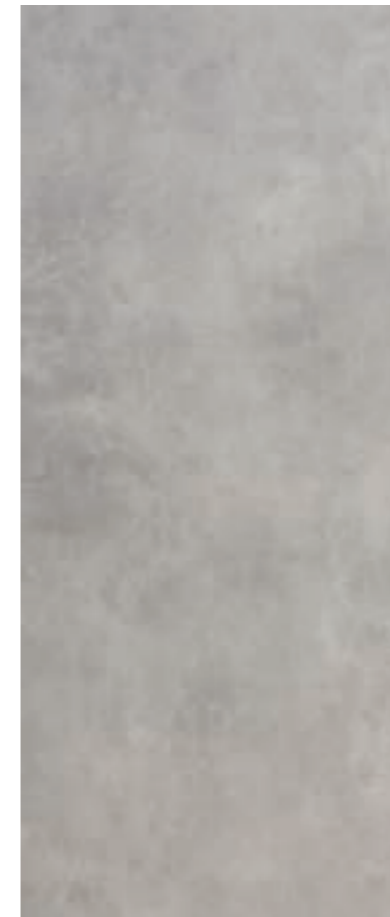
Matt · 3 & 5 mm

Vulcano Coal

Matt · 3 & 5 mm

Vulcano Roca

Matt · 3 & 5 mm



VULCANO CONCRETE



VULCANO CENIZA



VULCANO ROCA

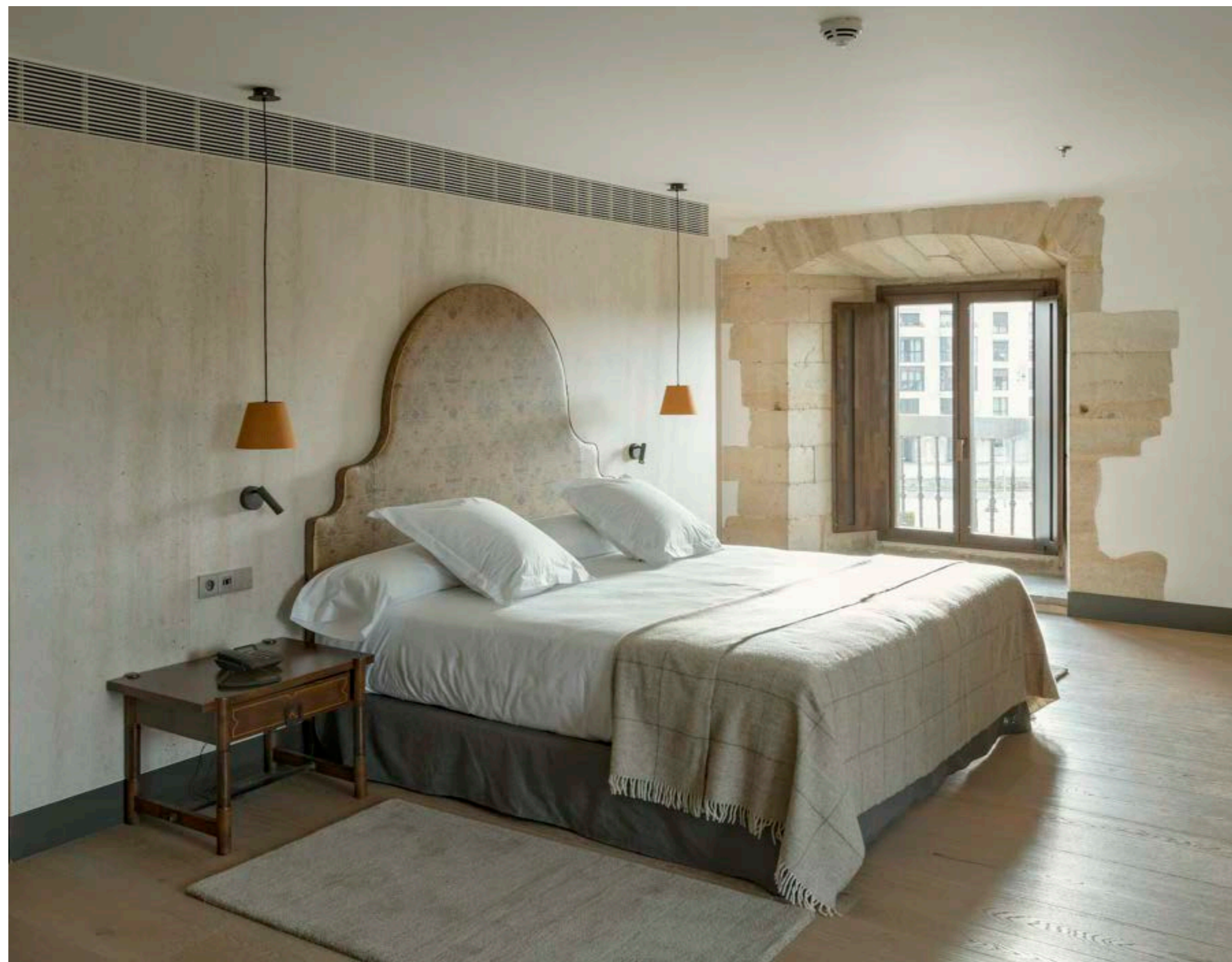


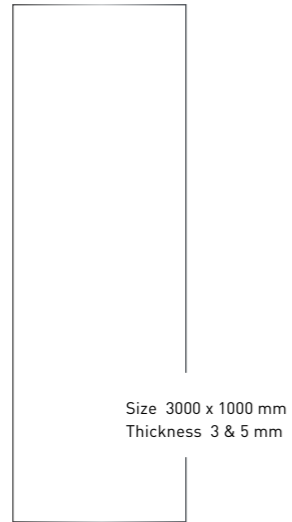
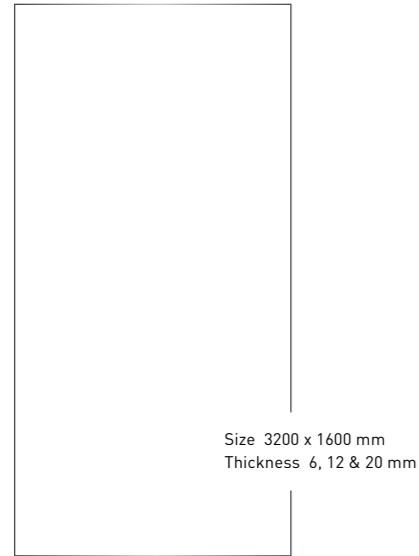
VULCANO COAL



Stone *Collection*

Items inspired by nature in the most sophisticated and elegant way, through a wide colour palette and unique veining.





Pierre Blue

Matt · 3 & 5 mm
 Bush Hammered · 3 & 5 mm
 3D Carving · 6, 12 & 20 mm

Basalt Black

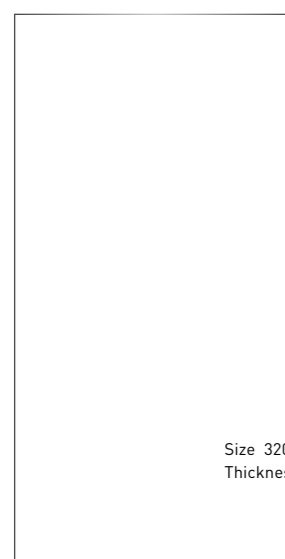
Matt · 3, 5, 6, 12 & 20 mm



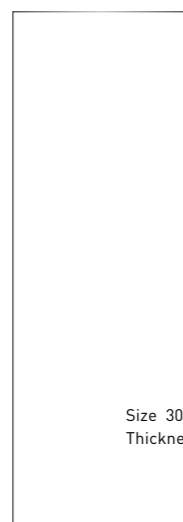
BASALT BLACK



PIERRE BLUE



Size 3200 x 1600 mm
Thickness 6, 12 & 20 mm

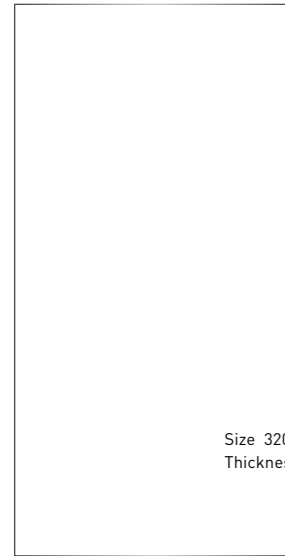


Size 3000 x 1000 mm
Thickness 3 & 5 mm

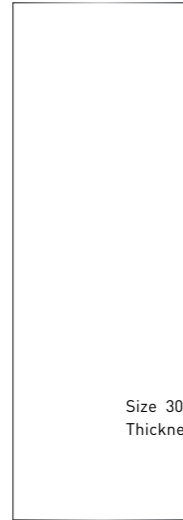
Cosmopolitan Black

Matt · 3, 5, 6 & 12 mm





Size 3200 x 1600 mm
Thickness 6, 12 & 20 mm



Size 3000 x 1000 mm
Thickness 3 & 5 mm

Limestone

Matt · 3 & 5 mm
3D Carving · 6, 12 & 20 mm
Bush Hammered · 3 & 5 mm



Strattos

Matt · 3 & 5 mm
Bush hammered · 3 & 5 mm



Slab variants.
*Ask representative for more design variants.

Size 3000 x 1000 mm
Thickness 3 & 5 mm



Breccia Brown

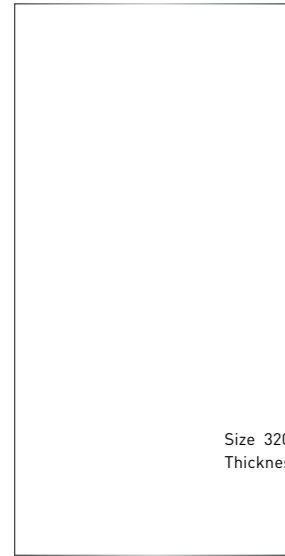
3D Carving · 6, 12 & 20 mm



*Bookmatch design available.
Ask representative for more design variants.

Size 3200 x 1600 mm
Thickness 6, 12 & 20 mm





Size 3200 x 1600 mm
Thickness 6, 12 & 20 mm



Size 3000 x 1000 mm
Thickness 3 & 5 mm

Travertino Pearl

Matt · 3, 5, 6, 12 & 20 mm
Bush Hammered · 3 & 5 mm
3D Carving · 6, 12 & 20 mm



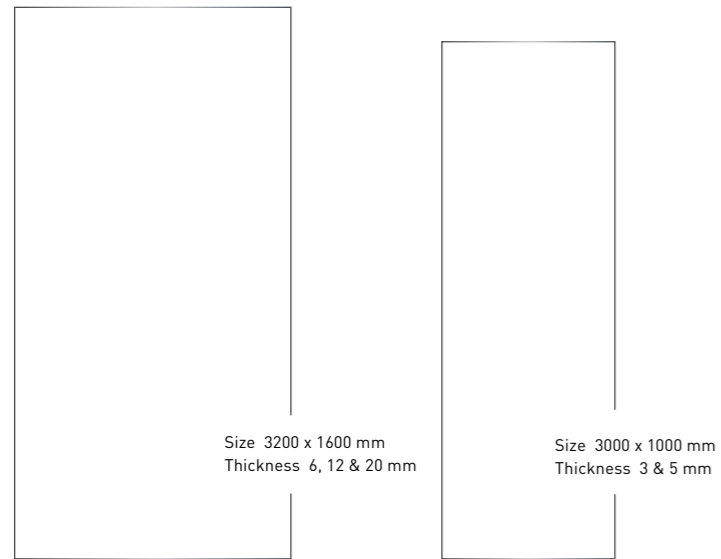
*Bookmatch design available.
Ask representative for more design variants.



Industrial *Collection*

An industrial spirit envelops this collection with overwhelming force. Cold and contrast-filled surfaces, to create modern style designs.





Rust Corten

Matt · 3, 5, 6, 12 & 20 mm
Bush Hammered · 3 & 5 mm

Rust Iron

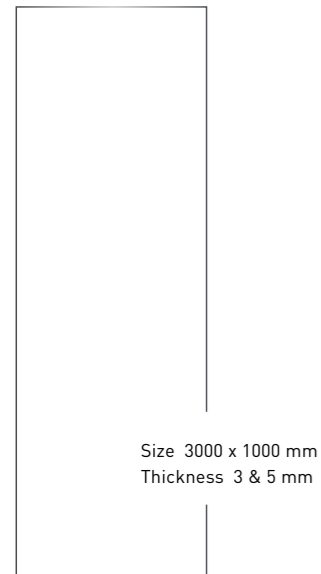
Matt · 3, 5, 6, 12 & 20 mm



RUST CORTEN



RUST IRON



Steel White

Matt · 3 & 5 mm

Slab variants



1 2 3

Steel Chrome

Matt · 3 & 5 mm

Slab variants



1 2 3



STEEL CHROME



STEEL WHITE

Size 3000 x 1000 mm
Thickness 3 & 5 mm

Steel Dark
Matt · 3 & 5 mm

Slab variants

1 2 3

Steel Marine
Matt · 3 & 5 mm

Slab variants

1 2 3

Steel Corten
Matt · 3 & 5 mm

Slab variants

1 2 3

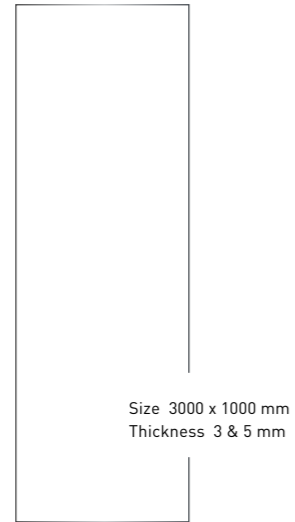
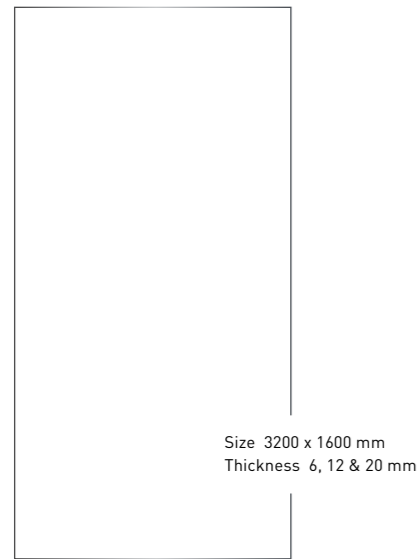


STEEL DARK

STEEL MARINE

STEEL CORTEN





Reggio

Matt · 3, 5, 6, 12 & 20 mm
Bush Hammered · 3 & 5 mm

Tektonika

Matt · 3 & 5 mm



REGGIO



TEKTONIKA

Urban

Bush Hammered · 3 & 5 mm

Size 3000 x 1000 mm
Thickness 3 & 5 mm

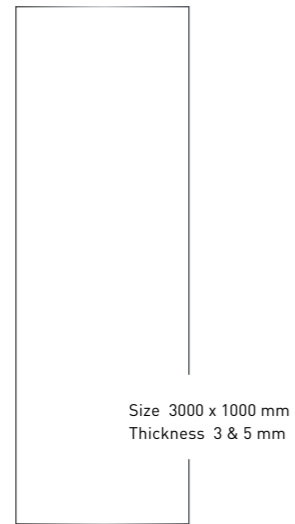
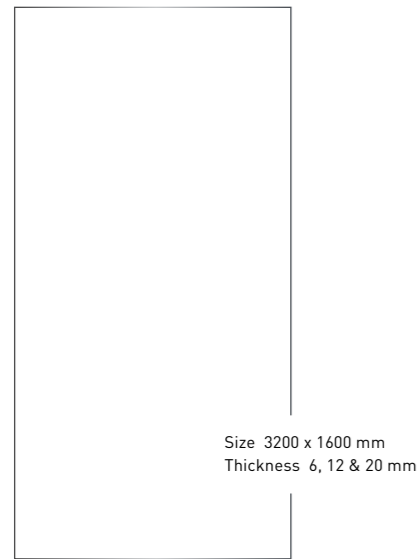


Ceppo

3D Carving - 6 & 12 mm

Size 3200 x 1600 mm
Thickness 6, 12 & 20 mm



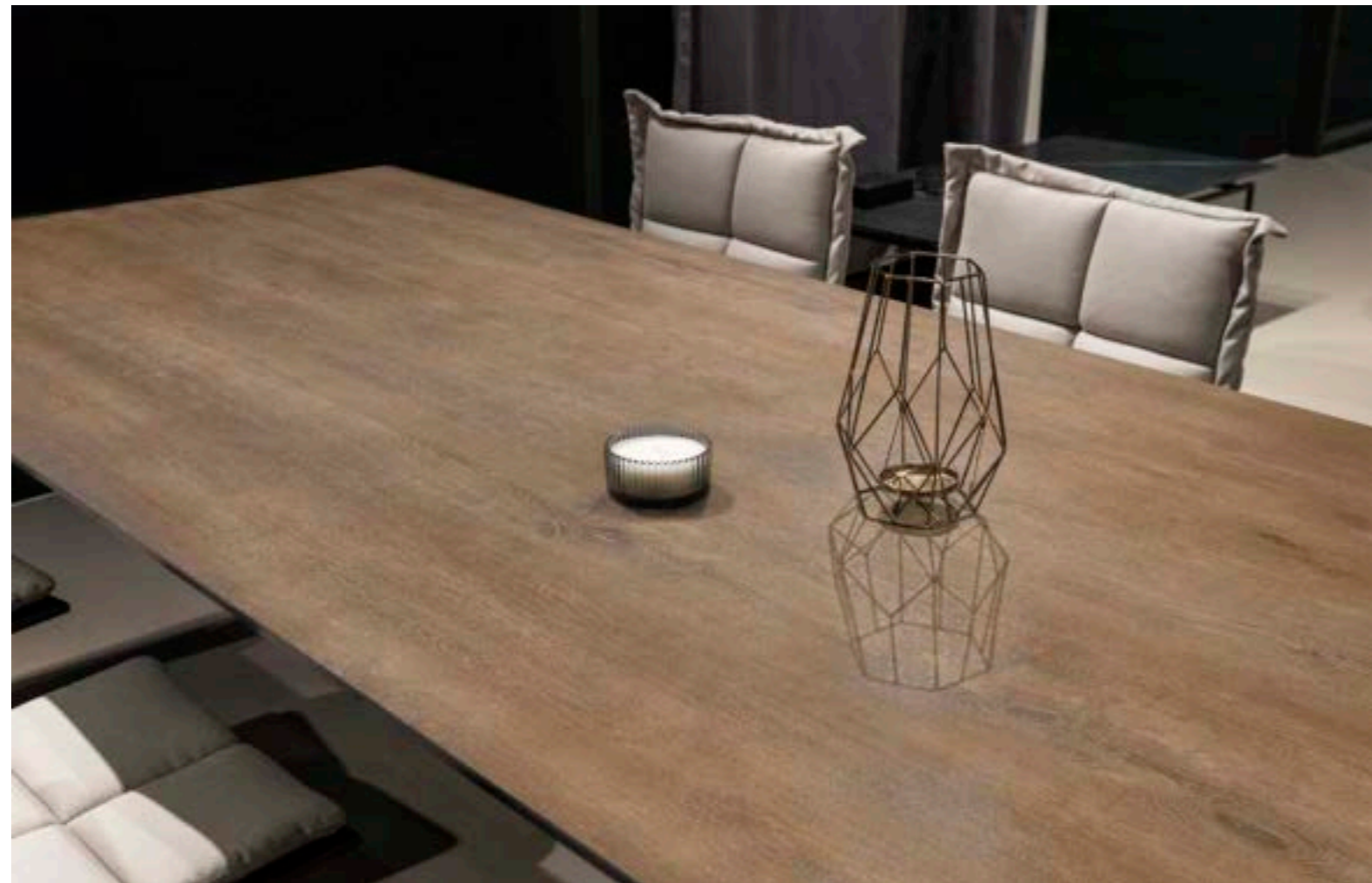


Zahir Perle

Matt · 3 & 5 mm

Legno

3D Carving · 6, 12 & 20 mm



ZAHIR PERLE



LEGNO

Marble *Collection*

A collection that truly stands out for its sophistication and exquisite selection. Each piece has been carefully selected and elaborated to highlight the most impressive colours and patterns, making it a perfect choice for those seeking luxury and distinction in their spaces.



Taj Mahal

Matt · 6, 12 & 20 mm
Polished · 6, 12 & 20 mm

Size 3200 x 1600 mm
Thickness 6, 12 & 20 mm

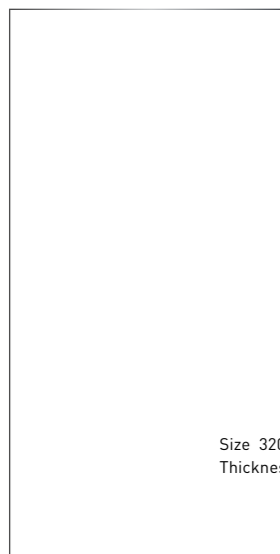


Bianco Lasa

Polished · 6, 12 & 20 mm
Matt · 3, 5, 6, 12 & 20 mm



*Bookmatch design available.
Ask representative for more design variants.



Size 3200 x 1600 mm
Thickness 6, 12 & 20 mm

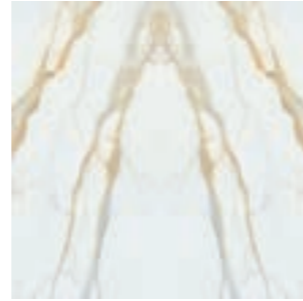


Size 3000 x 1000 mm
Thickness 3 & 5 mm

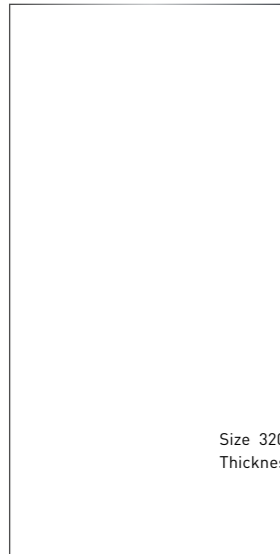


Marvel Gold

Polished · 6, 12 & 20 mm
Matt · 3, 5, 6, 12 & 20 mm



*Bookmatch design available.
Ask representative for more design variants.

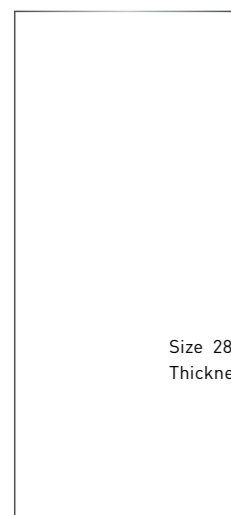


Size 3200 x 1600 mm
Thickness 6, 12 & 20 mm



Size 3000 x 1000 mm
Thickness 3 & 5 mm





Size 2800 x 1200 mm
Thickness 6 mm

Milos Bianco

Matt · 6 mm
Polished · 6 mm

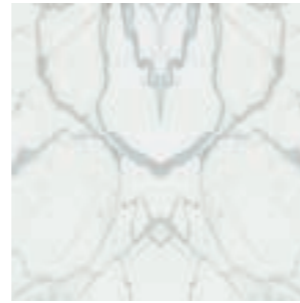


*Slab variants with continuous design.
Ask representative for more design variants.

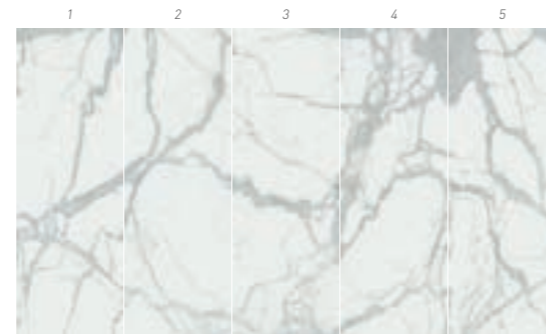


Kalos Bianco

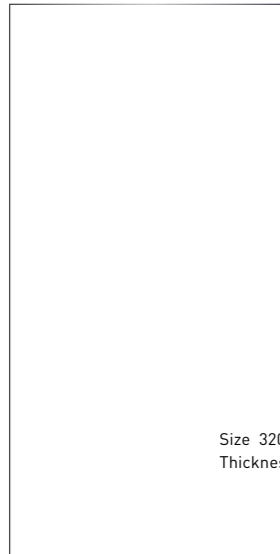
Polished · 6, 12 & 20 mm
Matt · 3, 5, 6, 12 & 20 mm



Bookmatch design available.



*Slab variants with continuous design.
Ask representative for more design variants.



Size 3200 x 1600 mm
Thickness 6, 12 & 20 mm



Size 3000 x 1000 mm
Thickness 3 & 5 mm



Bellagio

Matt · 6, 12 & 20 mm
Polished · 6, 12 & 20 mm



*Bookmatch design available.
Ask representative for more design variants.

Size 3200 x 1600 mm
Thickness 6, 12 & 20 mm



Calacatta White

Polished · 6, 12 & 20 mm
Matt · 3, 5, 6, 12 & 20 mm



*Bookmatch design available.
Ask representative for more design variants.

Size 3200 x 1600 mm
Thickness 6, 12 & 20 mm

Size 3000 x 1000 mm
Thickness 3 & 5 mm



Colossal Cream

Matt - 6, 12 & 20 mm
Polished - 6, 12 & 20 mm



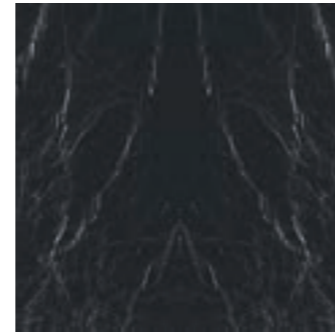
*Bookmatch design available.
Ask representative for more design variants.

Size 3200 x 1600 mm
Thickness 6, 12 & 20 mm



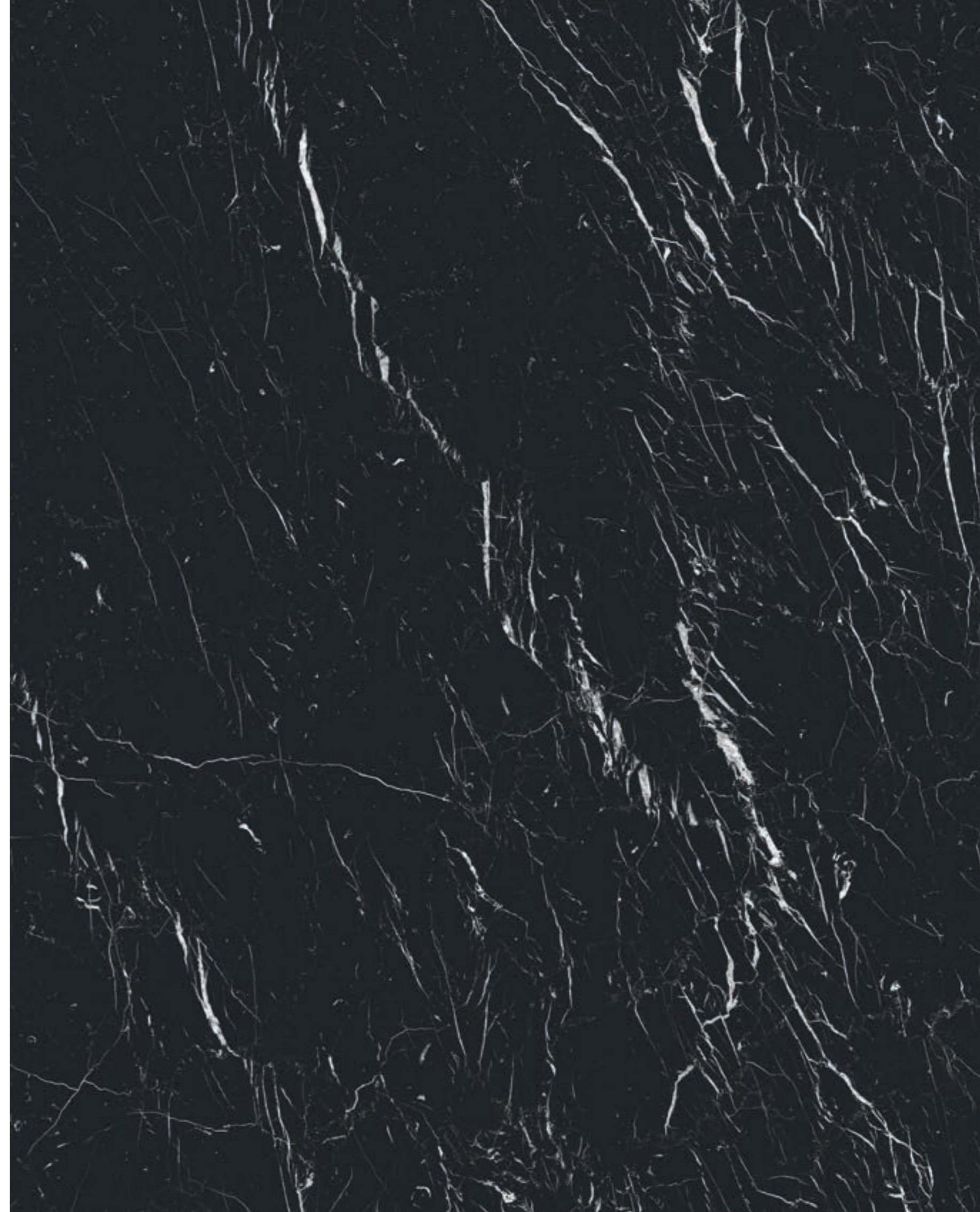
Concerto

Polished - 6, 12 & 20 mm
Matt - 6, 12 & 20 mm



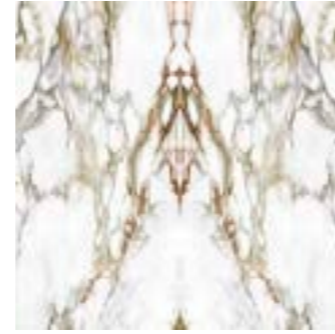
*Bookmatch design available.
Ask representative for more design variants.

Size 3200 x 1600 mm
Thickness 6, 12 & 20 mm



Essential Gold

Polished - 6, 12 & 20 mm
Matt - 6, 12 & 20 mm



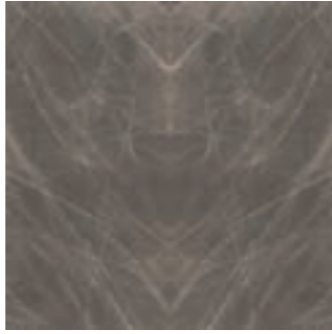
*Bookmatch design available.
Ask representative for more design variants.

Size 3200 x 1600 mm
Thickness 6, 12 & 20 mm



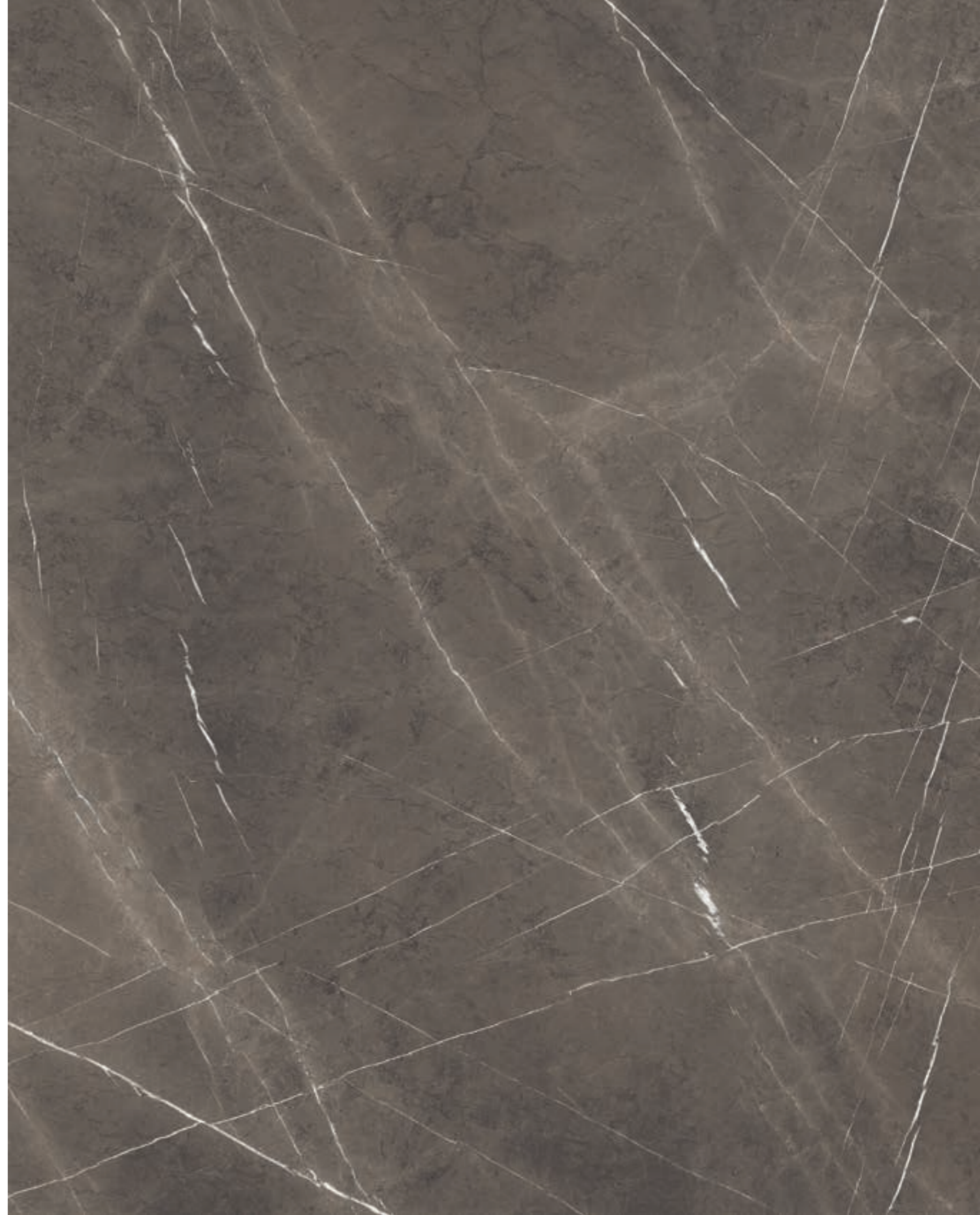
Ferox

Matt · 6 & 12 mm
Polished · 6 & 12 mm



*Bookmatch design available.
Ask representative for more design variants.

Size 3200 x 1600 mm
Thickness 6, 12 & 20 mm

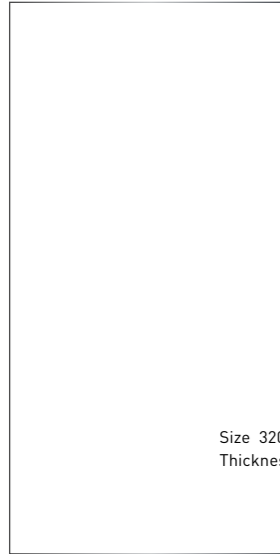


Fior di Bosco

Matt · 3, 5, 6, 12 & 20 mm



*Bookmatch design available.
Ask representative for more design variants.



Size 3200 x 1600 mm
Thickness 6, 12 & 20 mm



Size 3000 x 1000 mm
Thickness 3 & 5 mm



Kaledonia

Matt · 6 & 12 mm
Polished · 6 & 12 mm



*Bookmatch design available.
Ask representative for more design variants.

Size 3200 x 1600 mm
Thickness 6, 12 & 20 mm



Macchia Gold

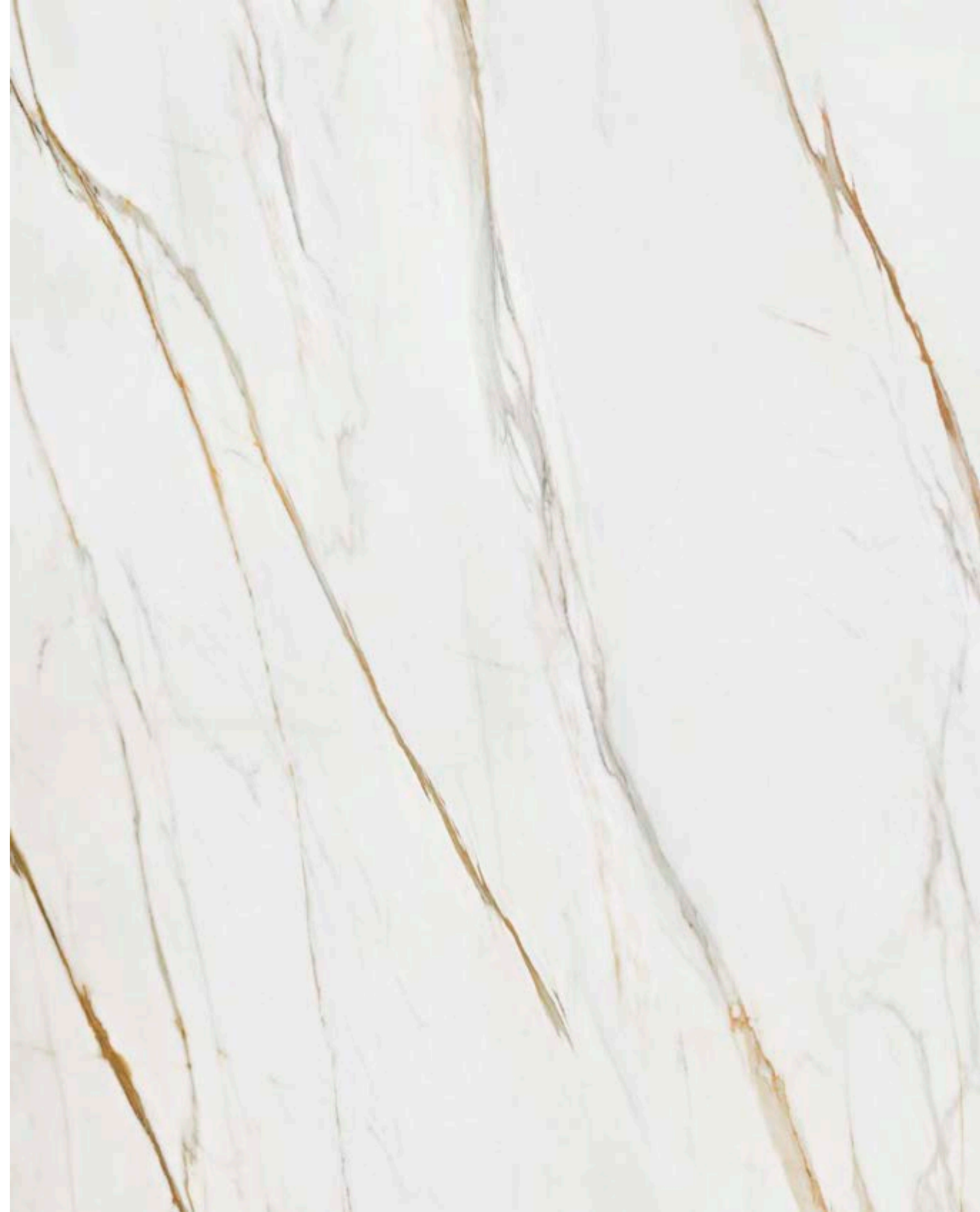
Matt · 3, 5, 6, 12 & 20 mm
Polished · 6, 12 & 20 mm



*Bookmatch design available.
Ask representative for more design variants.

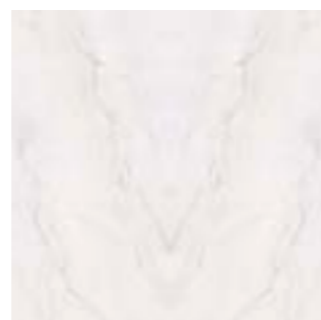
Size 3200 x 1600 mm
Thickness 6, 12 & 20 mm

Size 3000 x 1000 mm
Thickness 3 & 5 mm



Montblanc

3D Carving · 6, 12 & 20 mm



*Bookmatch design available.
Ask representative for more design variants.

Size 3200 x 1600 mm
Thickness 6, 12 & 20 mm



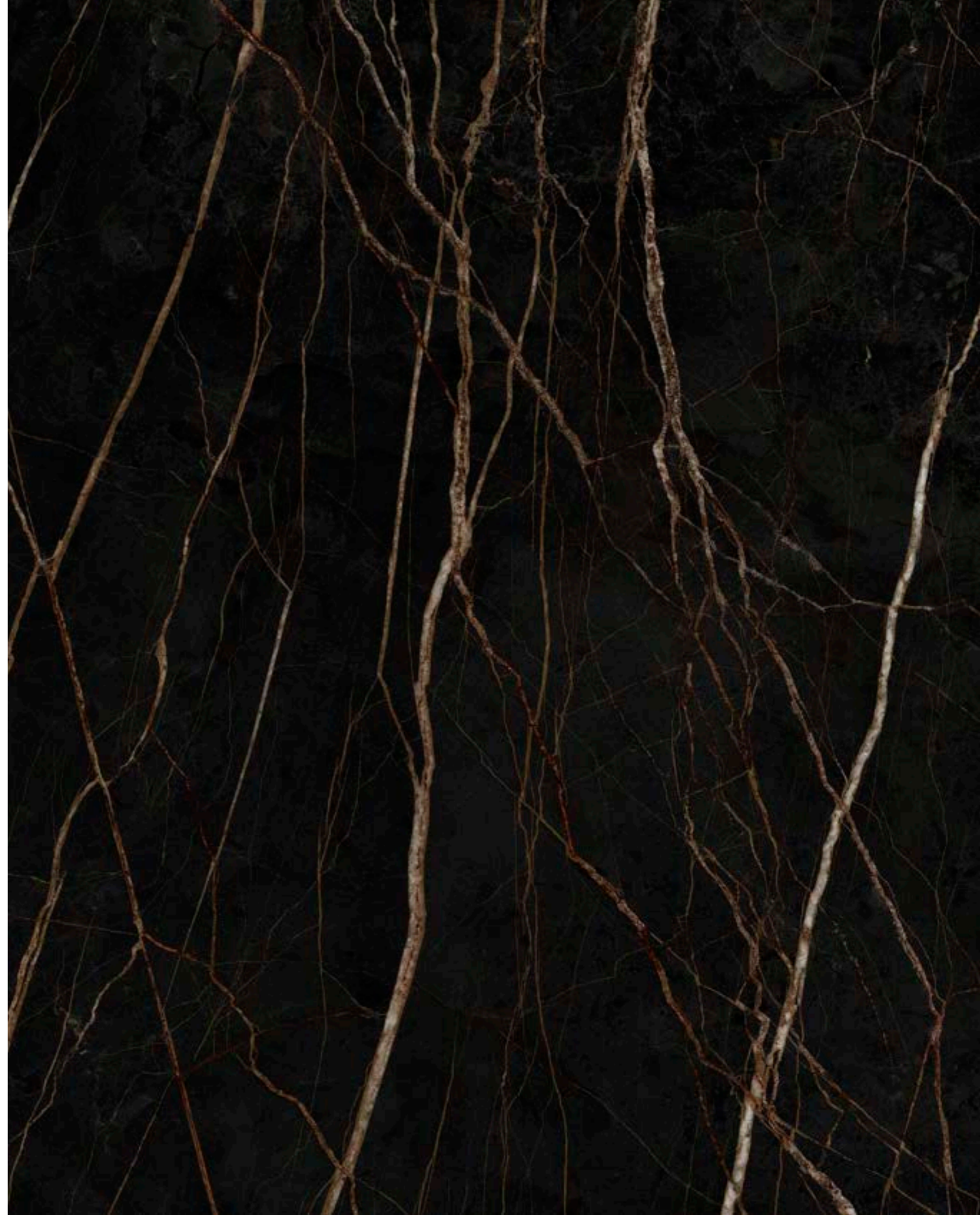
St. Laurent

Matt · 6, 12 & 20 mm



*Bookmatch design available.
Ask representative for more design variants.

Size 3200 x 1600 mm
Thickness 6, 12 & 20 mm



Supergrey

Matt · 6 & 12 mm
Polished · 6 & 12 mm



*Bookmatch design available.
Ask representative for more design variants.

Size 3200 x 1600 mm
Thickness 6, 12 & 20 mm



Tropical Green

Matt · 6 & 12 mm
Polished · 6 & 12 mm



*Bookmatch design available.
Ask representative for more design variants.

Size 3200 x 1600 mm
Thickness 6, 12 & 20 mm



Iconic *Collection*

The most emblematic collection, with the most vibrant and outstanding patterns. Pieces of art created to elevate any design project, forever remaining the main character of the room.



Amazonia

Polished · 6 & 12 mm
3D Carving · 6 & 12 mm

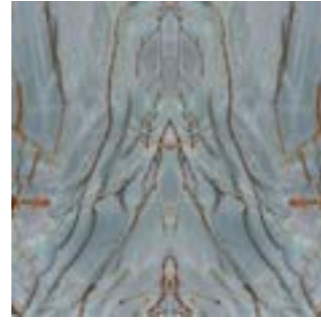
Size 3200 x 1600 mm
Thickness 6, 12 & 20 mm



Arctic Blue

Matt · 6 & 12 mm
Polished · 6 & 12 mm

Size 3200 x 1600 mm
Thickness 6, 12 & 20 mm



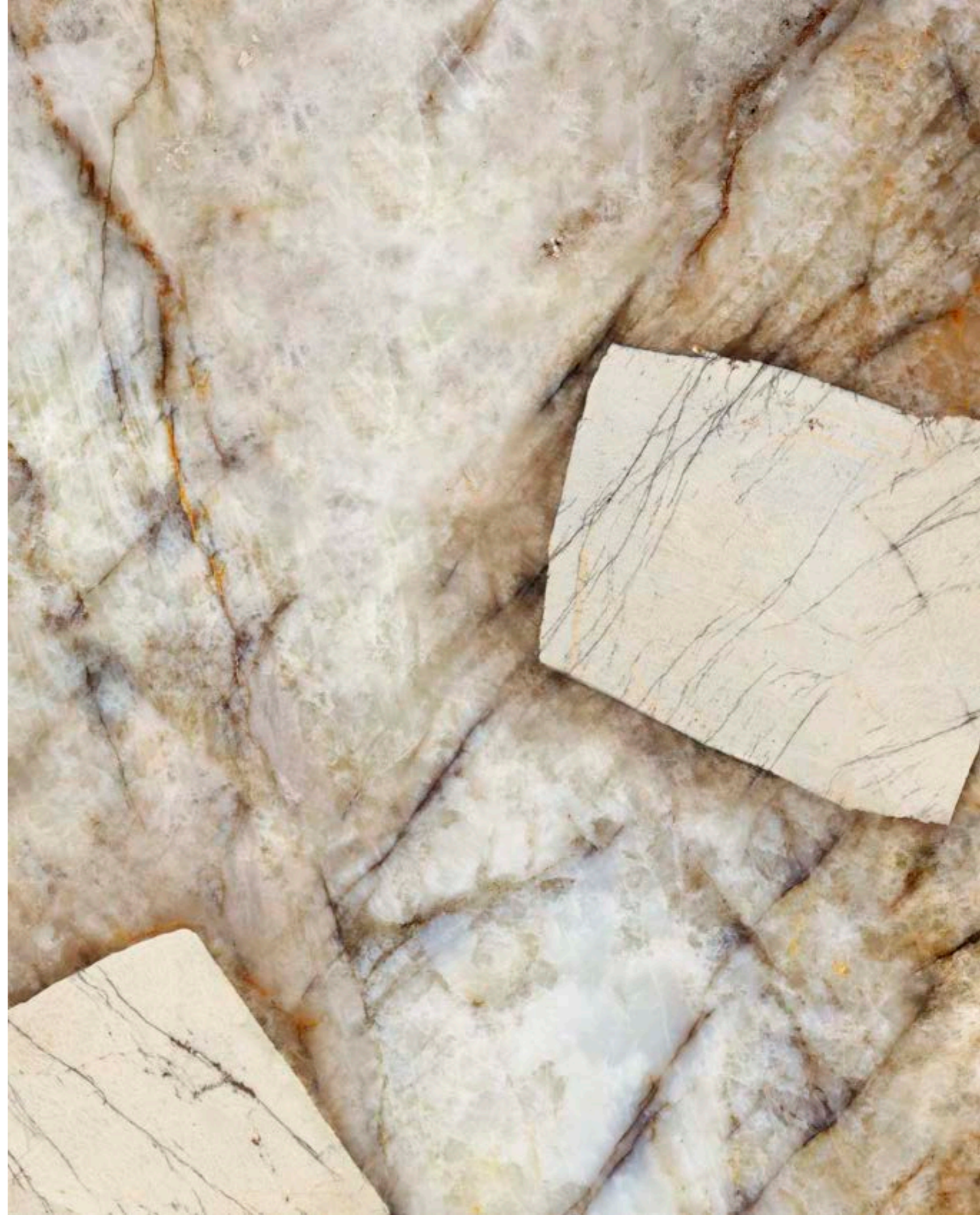
*Bookmatch design available.
Ask representative for more design variants.



Patagonia

Matt · 6 & 12 mm
Polished · 6 & 12 mm

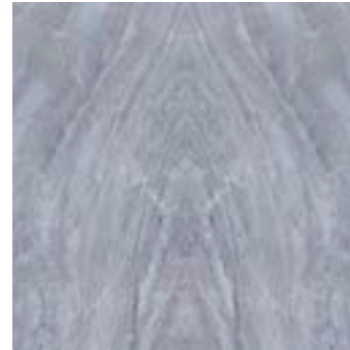
Size 3200 x 1600 mm
Thickness 6, 12 & 20 mm



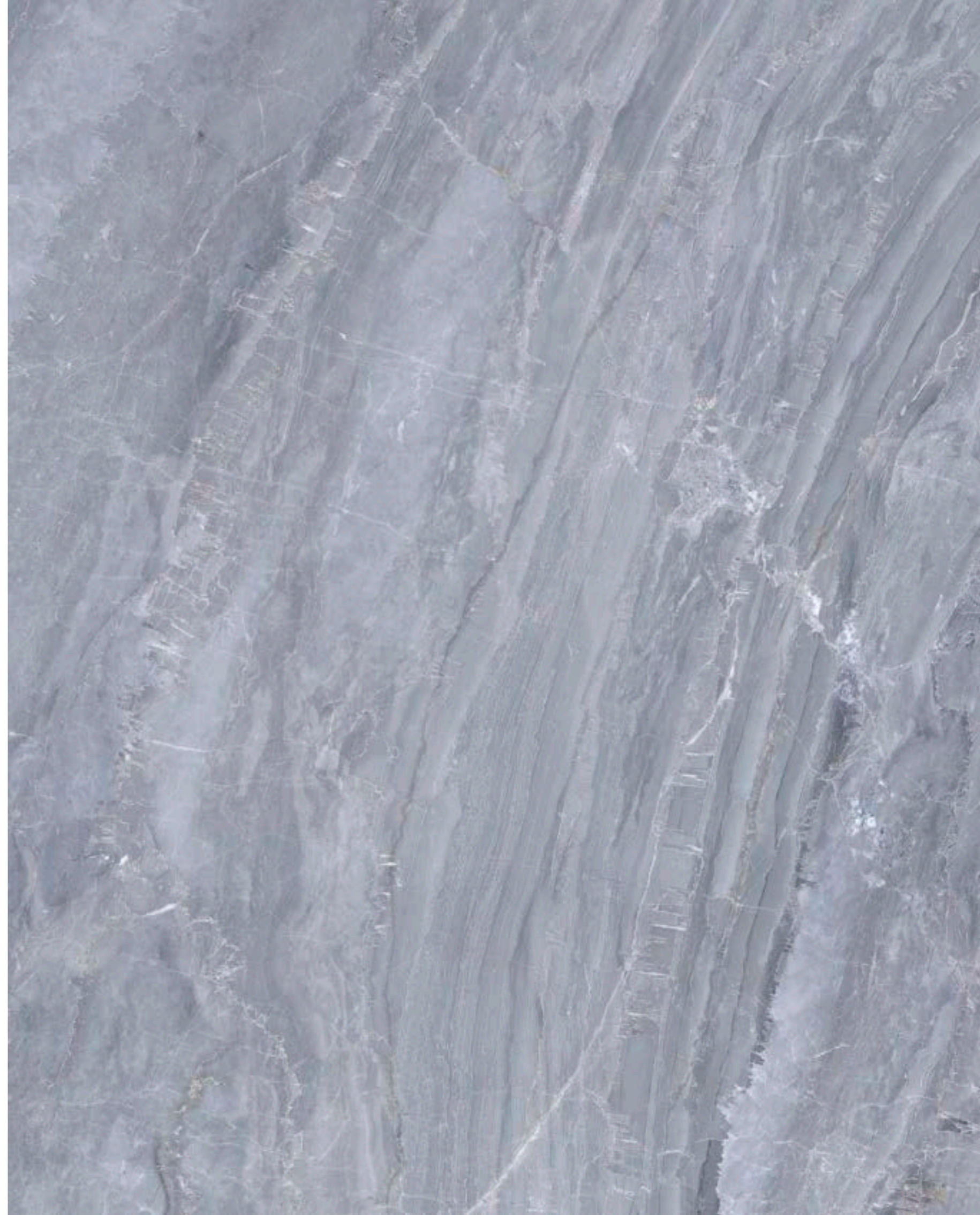
Nuvola

Matt · 6 & 12 mm
Polished · 6 & 12 mm

Size 3200 x 1600 mm
Thickness 6, 12 & 20 mm



*Bookmatch design available.
Ask representative for more design variants.



Forest

Matt · 6 & 12 mm
Polished · 6 & 12 mm

Size 3200 x 1600 mm
Thickness 6, 12 & 20 mm



*Bookmatch design available.
Ask representative for more design variants.



Starlight

Matt · 6 & 12 mm
Polished · 6 & 12 mm

Size 3200 x 1600 mm
Thickness 6, 12 & 20 mm



*Bookmatch design available.
Ask representative for more design variants.



Onyx Serena

Matt · 6 & 12 mm
Polished · 6 & 12 mm

Size 3200 x 1600 mm
Thickness 6, 12 & 20 mm



*Bookmatch design available.
Ask representative for more design variants.



6, 12 & 20 MM

COUNTERTOPS

Collection



6 mm

12 mm

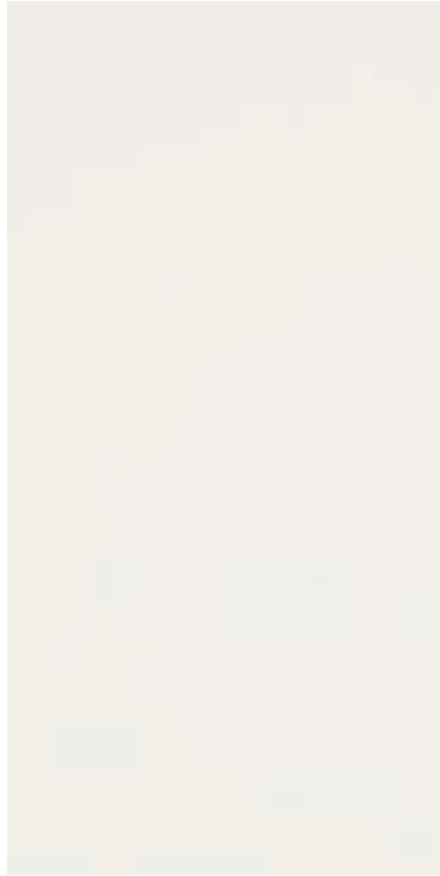
20 mm

3200 x 1600 mm





PURE BLACK
Matt · 6, 12 & 20 mm



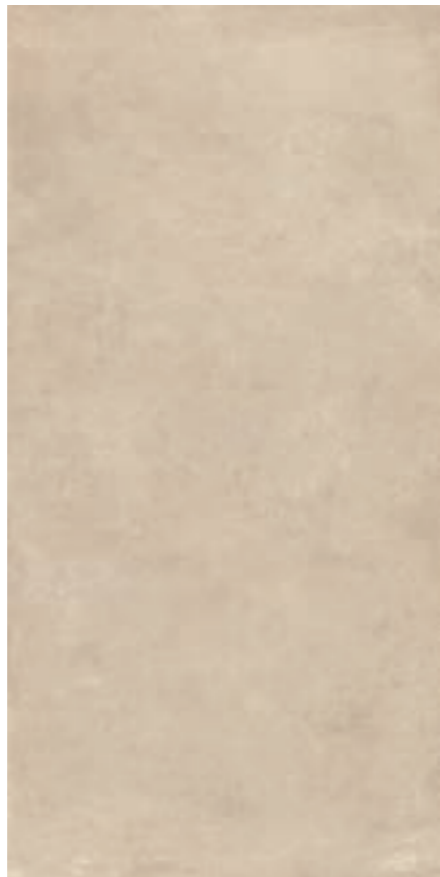
PURE ICE
Matt · 6, 12 & 20 mm
Polished · 6, 12 & 20 mm



TAMBORA
Matt · 6, 12 & 20 mm



TESA
Matt · 6, 12 & 20 mm

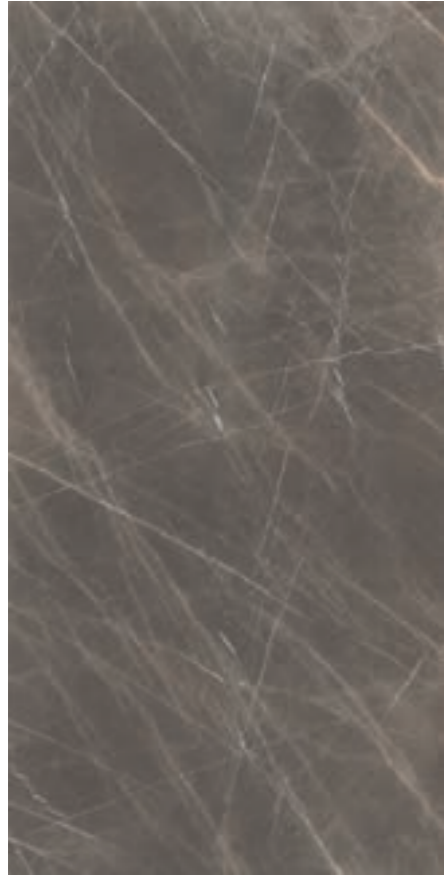


THAR
Matt · 6, 12 & 20 mm



THUNDRA
Matt · 6, 12 & 20 mm

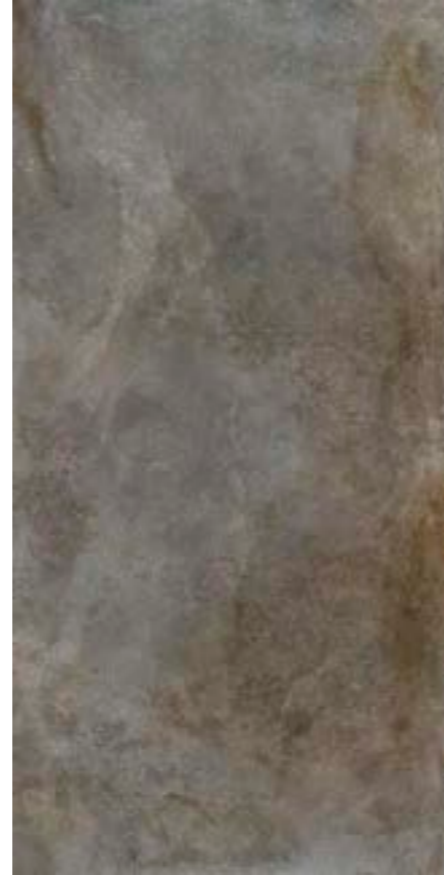




FEROX
Matt - 6 & 12 mm
Polished - 6 & 12 mm



LEGNO
3D Carving - 6, 12 & 20 mm



REGGIO
Matt - 6, 12 & 20 mm



RUST CORTEN
Matt - 6, 12 & 20 mm



RUST IRON
Matt - 6, 12 & 20 mm

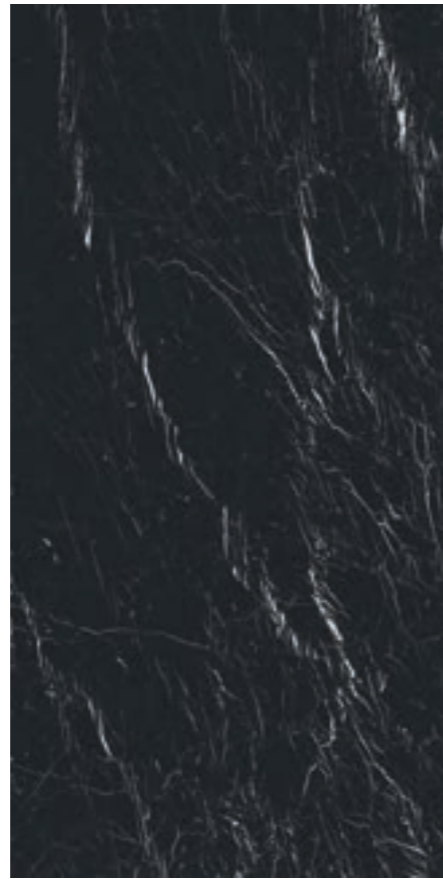


CPSMOPOLITAN BLACK
Matt - 6 & 12 mm





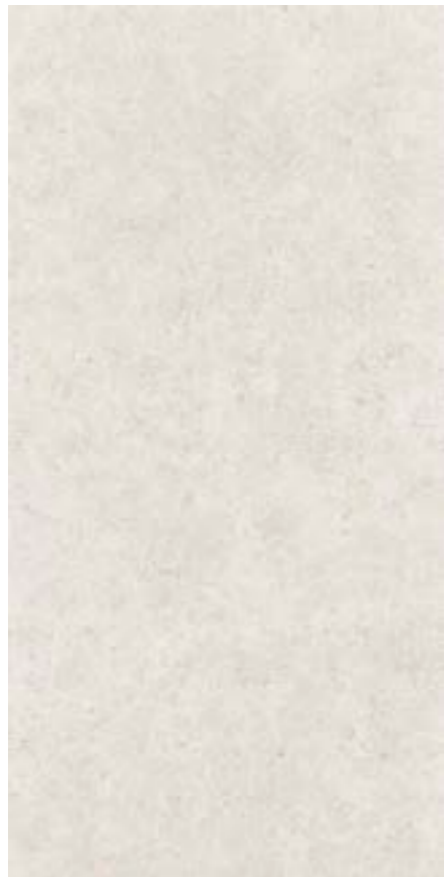
BRECCIA BROWN
3D Carving · 6, 12 & 20 mm
BOOKMATCH DESIGN AVAILABLE



CONCERTO
Matt · 6, 12 & 20 mm | Polished · 6, 12 & 20 mm
BOOKMATCH DESIGN AVAILABLE



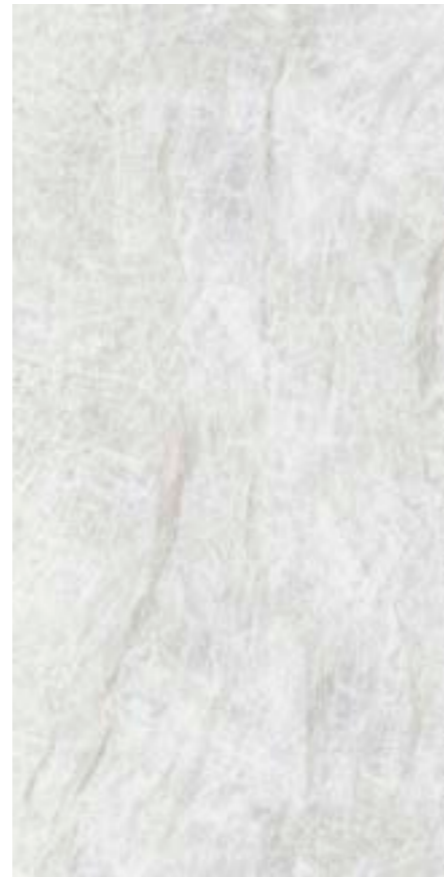
BASALT BLACK
Matt · 6, 12 & 20 mm



LIMESTONE
3D Carving · 6, 12 & 20 mm



PIERRE BLEUE
3D Carving · 6, 12 & 20 mm



TAJ MAHAL
Matt · 6, 12 & 20 mm
Polished · 6, 12 & 20 mm

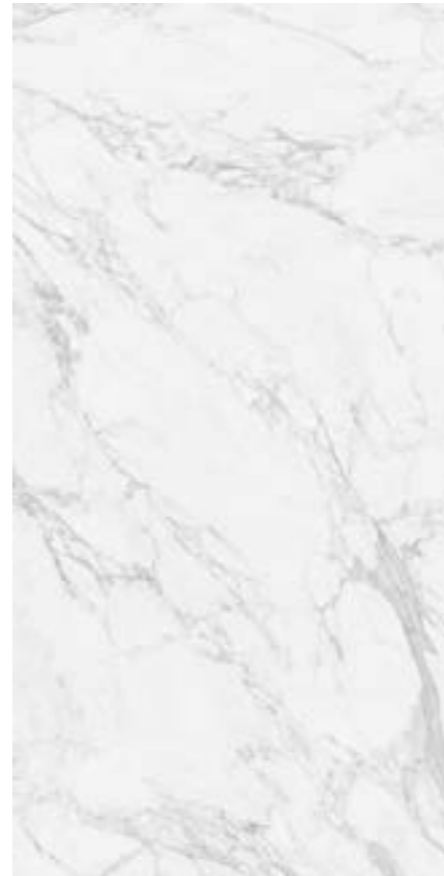




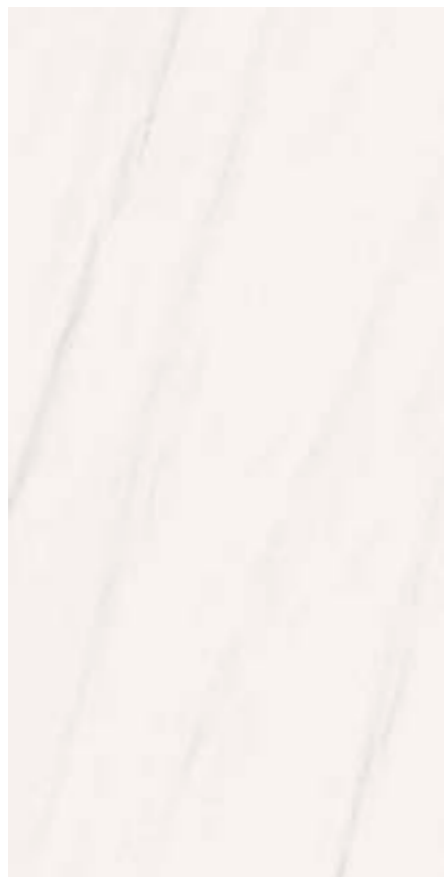
BELLAGIO
3D Carving · 6, 12 & 20 mm
BOOKMATCH DESIGN AVAILABLE



COLOSSAL CREAM
Matt · 6, 12 & 20 mm | Polished · 6, 12 & 20 mm
BOOKMATCH DESIGN AVAILABLE



CALACATTA WHITE
Matt · 6, 12 & 20 mm | Polished · 6, 12 & 20 mm
BOOKMATCH DESIGN AVAILABLE



BIANCO LASA
Matt · 6, 12 & 20 mm | Polished · 6, 12 & 20 mm
BOOKMATCH DESIGN AVAILABLE



ESSENTIAL GOLD
Matt · 6, 12 & 20 mm | Polished · 6, 12 & 20 mm
BOOKMATCH DESIGN AVAILABLE



CEPPO
3D Carving · 6 & 12 mm

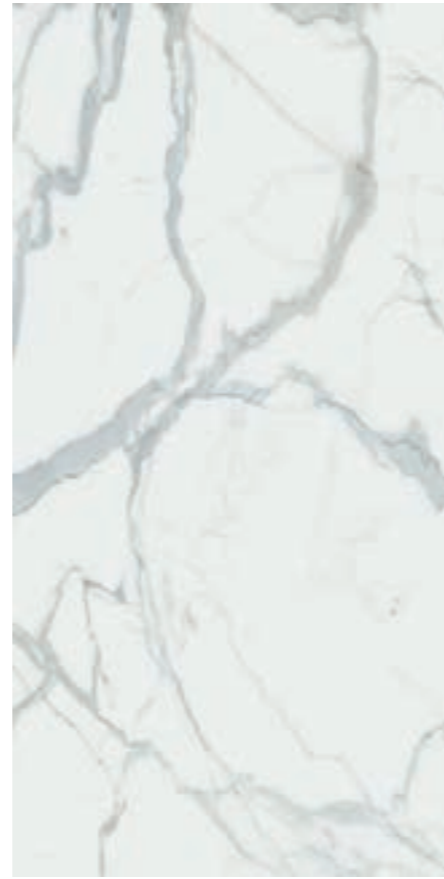




FIOR DI BOSCO
Matt · 6, 12 & 20 mm
BOOKMATCH DESIGN AVAILABLE



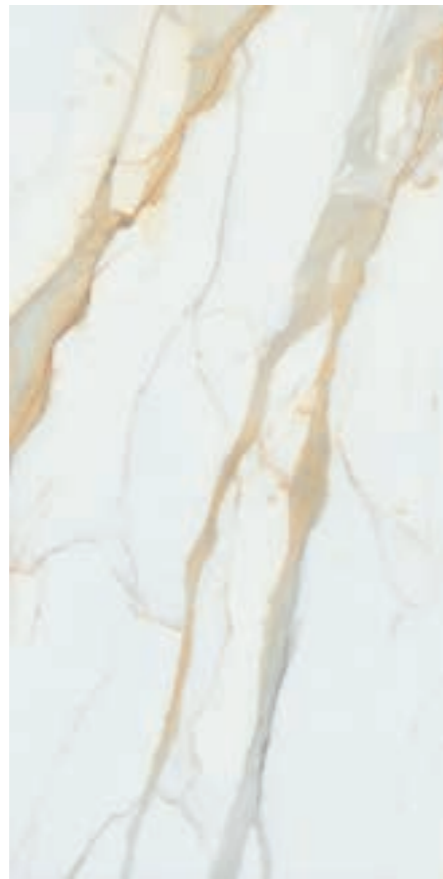
KALEDONIA
Matt · 6 & 12 mm | Polished · 6 & 12 mm
BOOKMATCH DESIGN AVAILABLE



KALOS BIANCO
Matt · 6, 12 & 20 mm | Polished · 6, 12 & 20 mm
BOOKMATCH DESIGN AVAILABLE



MACCHIA GOLD
Matt · 6, 12 & 20 mm | Polished · 6, 12 & 20 mm
BOOKMATCH DESIGN AVAILABLE



MARVEL GOLD
Matt · 6, 12 & 20 mm | Polished · 6, 12 & 20 mm
BOOKMATCH DESIGN AVAILABLE



MONTBLANC
3D Carving · 6, 12 & 20 mm
BOOKMATCH DESIGN AVAILABLE





ST. LAURENT
Matt · 6, 12 & 20 mm
BOOKMATCH DESIGN AVAILABLE



SUPERGREY
Matt · 6 & 12 mm | Polished · 6 & 12 mm
BOOKMATCH DESIGN AVAILABLE



TRAVERTINO PEARL
Matt · 6, 12 & 20 mm | 3D Carving · 6, 12 & 20 mm
BOOKMATCH DESIGN AVAILABLE



TROPICAL GREEN
Matt · 6 & 12 mm | Polished · 6 & 12 mm
BOOKMATCH DESIGN AVAILABLE



AMAZONIA
Polished · 6 & 12 mm
3D Carving · 6 & 12 mm

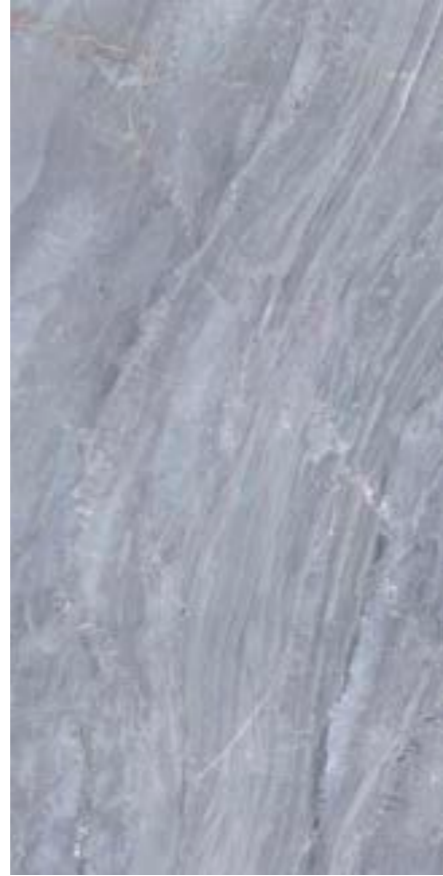


ARCTIC BLUE
Matt · 6 & 12 mm | Polished · 6 & 12 mm
BOOKMATCH DESIGN AVAILABLE





FOREST
Matt · 6 & 12 mm | Polished · 6 & 12 mm
BOOKMATCH DESIGN AVAILABLE



NUVOLA
Matt · 6 & 12 mm | Polished · 6 & 12 mm
BOOKMATCH DESIGN AVAILABLE



PATAGONIA
Matt · 6 & 12 mm
Polished · 6 & 12 mm



STARLIGHT
Matt · 6 & 12 mm | Polished · 6 & 12 mm
BOOKMATCH DESIGN AVAILABLE

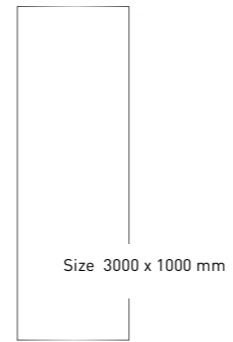


UNDER *PROYECT* ITEMS

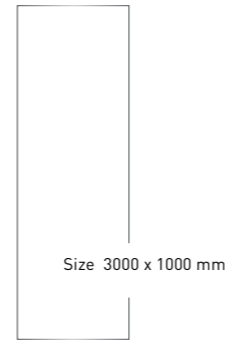
Items available under request.
Contact your representative for more information.



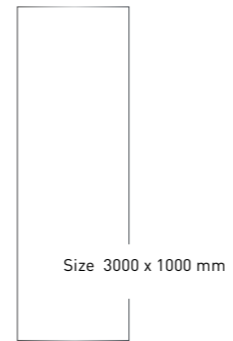
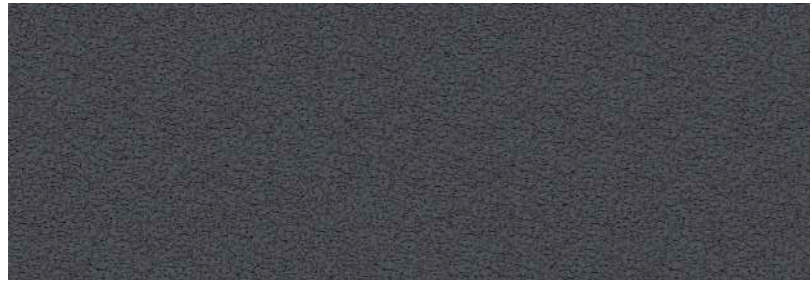
BLAZE DARK
Matt · 3 & 5 mm



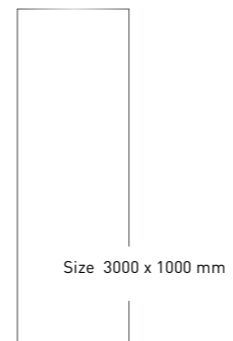
BLAZE SNOW
Matt · 3 & 5 mm



BLOOMCORE
3D Carving · 3 mm

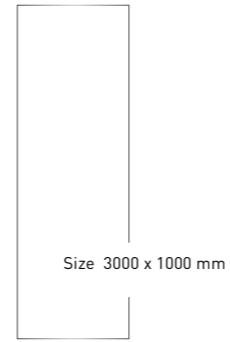


BLACKFALLS
Matt · 6 & 12 mm | Polished · 6 & 12 mm



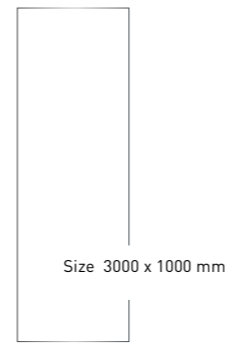
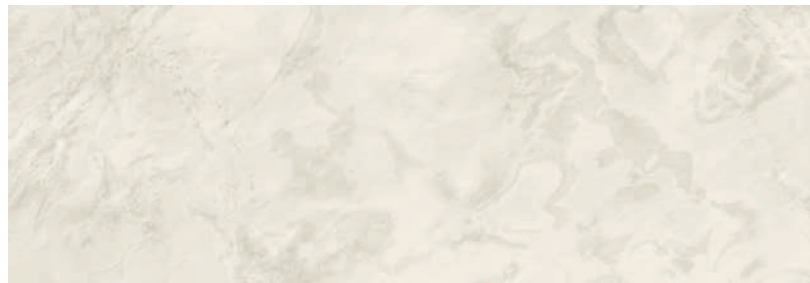
OPIUM BLACK

Slate · 5 mm



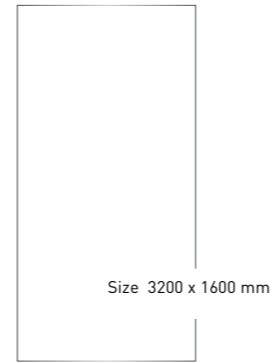
SLATE IVORY

Slate · 5 mm



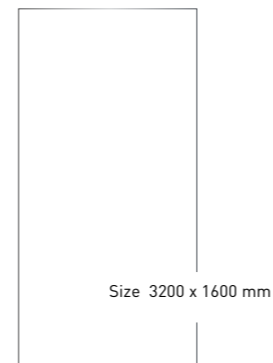
ARDESIA NERO

Matt · 6, 12 & 20 mm



QUARTZITE STONE

Matt · 6, 12 & 20 mm | Polished · 6, 12 & 20 mm



RUST COOPER
Matt · 3 & 5 mm



Size 3200 x 1600 mm

CRYSTALLO
Matt · 6, 12 & 20 mm | Polished · 6, 12 & 20 mm

BOOKMATCH DESIGN AVAILABLE



Size 3200 x 1600 mm

CORALINA
3D Carving · 6 & 12 mm | Bush Hammered · 3 & 5 mm



Size 3200 x 1600 mm



Size 3000 x 1000 mm

ÁRTICO
Matt · 6 & 12 mm | Polished · 6 & 12 mm

BOOKMATCH DESIGN AVAILABLE



Size 3200 x 1600 mm



gallery
PROJECT
FAÇADES REFERENCES



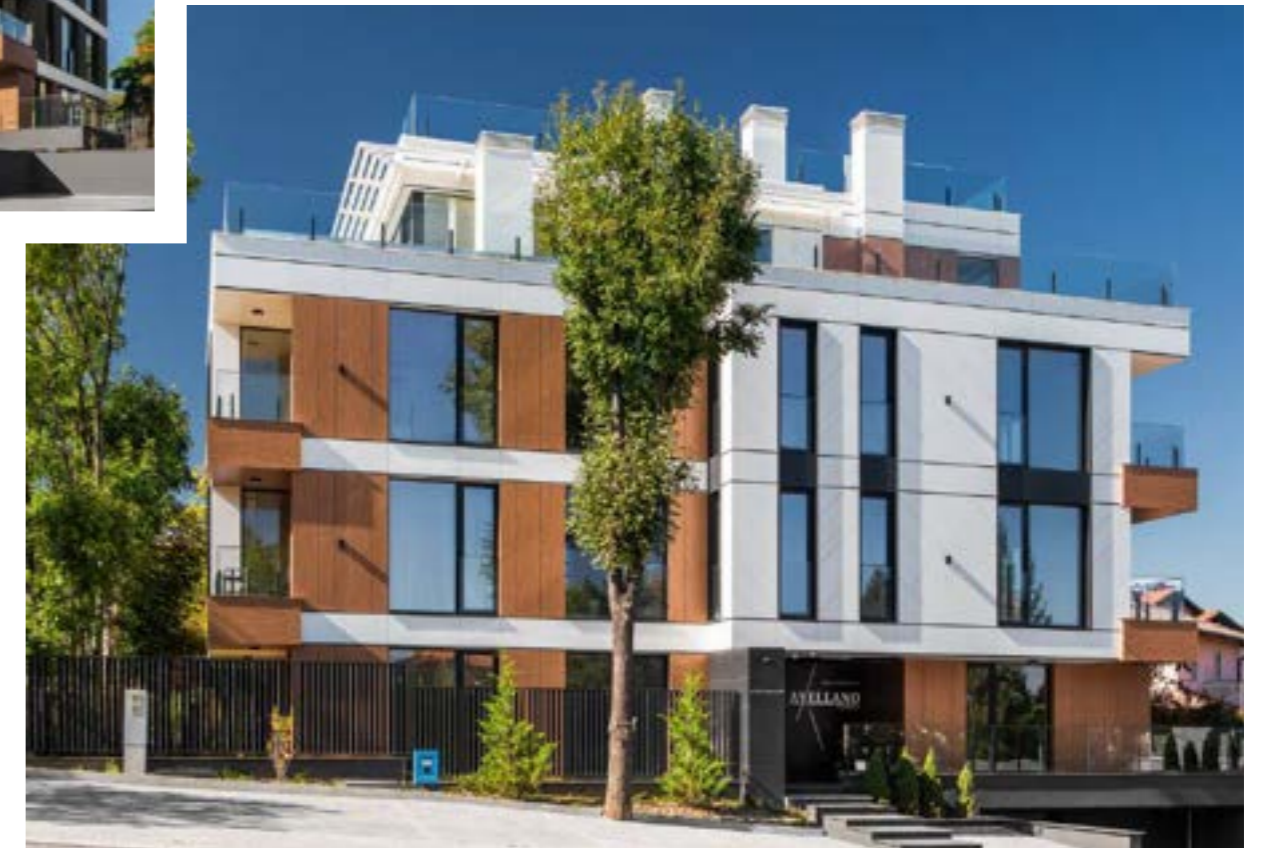
TECHLAM®
Pure Black
Residential Villa Martín
Orihuela Coast, Alicante



TECHLAM®
Pure Neu
Star Center of the
University of Jun-ju, Korea



TECHLAM®
Pure Ice
Residential Boutique Avellano





TECHLAM®
Pure Antracita, Hydra Argen
Dormitory of Inha University,
Korea



TECHLAM®
Pure Neu
Arena Corinthians
Sao Paulo, Brazil





TECHLAM®
Steel Corten, Pure Neu
Residential House



TECHLAM®
Steel Dark
Residential Laan van Spartaan
Amsterdam, Netherlands



TECHLAM®
Blaze Dark
Residential



TECHLAM®
Basic Neu,
Quartzite Stone,
Residential in
Alicante, Spain

Functional characteristics

Características funcionales

The large sizes pieces XXL make the installation easier.

The panels can be printed with signs or pictures during the manufacture.

It does not blind with the reflection of hard light sources.

Long-life. Guarantees low maintenance and replacing panels is nearly no necessary.

Its large size considerably reduces the area where the different units are joined together or where bacteria can be reproduced easily.

After its installation, it does not need any specific maintenance.

Las piezas de gran tamaño XXL facilitan la colocación.

Las láminas pueden imprimirse durante la fabricación con señales e imágenes.

No deslumbra con la reflexión de fuentes de luz fuerte.

Mayor durabilidad. Garantiza un bajo mantenimiento y escasa necesidad de remplazo de paneles.

Sus amplias dimensiones reducen considerablemente el área de unión entre las distintas piezas o zonas donde las bacterias se reproducen con facilidad.

No necesita mantenimiento específico tras su instalación.

Technical characteristics

Características técnicas

Physical-Chemical Properties <i>Características Físico-Mecánicas</i>	Standard <i>Método de ensayo</i>	Required Value <i>Valor exigido</i>	Average TECHLAM® rating. 3 mm <i>Valor medio TECHLAM®. 3 mm</i>
Water absorption <i>Absorción del agua</i>	UNE EN ISO 10545-3	Max. 0,5%	0,2%
Flexion resistance <i>Resistencia a la flexión</i>	UNE EN ISO 10545-4	Min. 35 N/mm ²	54 N/mm ²
Resistance to abrasion <i>Resistencia a la abrasión</i>	UNE EN ISO 10545-7	Declare the abrasion class and revolutions <i>Declarar la clase de abrasión y revoluciones</i>	From Class 2 to Class 5 / From 600 to 12.000 revolutions <i>Desde Clase 2 hasta Clase 5 / Desde 600 hasta 12.000 revoluciones</i>
Surface hardness (MOHS scale) <i>Dureza superficial [Escala MOHS]</i>	UNE EN ISO 67-101	Test method is available <i>Método de ensayo disponible</i>	7
Resistance to chemical attack <i>Resistencia al ataque químico</i>	UNE EN ISO 10545-13	No sample should present signs of chemical attack <i>Ninguna muestra debe presentar rastros de ataque químico</i>	No visible defects <i>Ningún defecto visible</i>
Frost resistance <i>Resistencia a las heladas</i>	UNE EN ISO 10545-12	Test method is available <i>Método de ensayo disponible</i>	No visible defects <i>Ningún defecto visible</i>
Fire resistance <i>Resistencia al fuego</i>	Commission Decision 96/603/EC	Test method is available <i>Método de ensayo disponible</i>	A1 [Fire resistant] <i>A1 [resistencia al fuego]</i>
Resistance (coefficient of restitution) <i>Impacto [coeficiente de restitución]</i>	UNE EN ISO 10545-5	Test method is available <i>Método de ensayo disponible</i>	0,77
Stain resistance <i>Resistencia a las manchas</i>	UNE EN ISO 10545-14	Test method is available <i>Método de ensayo disponible</i>	Class 5. Stains cleaned with hot water <i>Clase 5. Manchas eliminadas con agua caliente</i>
Slip resistance (pendulum method) <i>Deslizamiento [método del péndulo]</i>	UNE ENV 12633	Test method is available <i>Método de ensayo disponible</i>	Depending on the finish <i>Dependiendo del acabado</i>
Resistance to thermal shock <i>Resistencia al choque térmico</i>	UNE EN ISO 10545-9	Test method is available <i>Método de ensayo disponible</i>	No visible defects <i>Ningún defecto visible</i>



Versatility: TECHLAM® is a large size XXL tile 1000x3000 mm that can be adapted to all sizes.

Versatilidad: TECHLAM® es una pieza de gran formato XXL (paneles de 1000x3000 mm.) que se puede adaptar a todas las medidas.



Waterproof qualities: almost 0 water absorption, water, liquids, organic materials and graffiti cannot penetrate into this material.

Impermeabilidad: nivel de absorción próximo a 0, impermeable y resistente a líquidos.



Hygienic surfaces: fully compatible with food stuffs. The product can be cleaned extremely easily.

Superficie higiénica: no desprende sustancias nocivas ni permite la proliferación de moho, hongos ni bacterias, por lo que es totalmente compatible con los productos alimenticios.



Cleaning: no special cleaning products required.

Fácil de limpiar: no necesita cuidados ni productos especiales para su limpieza.



Unalterable colours: without any organic pigment, TECHLAM® color can resist UV radiation and extreme climatic conditions.

Colores inalterables: al no tener pigmentos orgánicos, el color es resistente a la radiación UV y a las condiciones climáticas más severas.



Heat resistant: TECHLAM® is a high temperature resistant material.

Resistencia al fuego y a altas temperaturas.



Chemical product resistant: TECHLAM® is resistant to detergents and disinfectants.

Resistencia a productos químicos: disolventes, desinfectantes y detergentes.



Breaking strength: its thinness provides great resistance to bending.

Resistente a la flexión: su bajo espesor le proporciona una alta resistencia a flexión.



Hardness: scratch and abrasion resistant.

Resistencia al desgaste: su superficie y dureza lo hacen altamente resistente al rayado y a la abrasión.



Environmental friendly: 100% natural. TECHLAM® does not release any substances, also it can be easily milled and recycled.

Respetuoso con el medioambiente: 100% natural. No desprende ninguna sustancia al entorno y puede ser reciclado fácilmente para la fabricación de áridos o similares.



Suitable for food contact. Does not release substances that harm the environment; totally suitable for contact with foodstuffs.

Idóneo para contacto con alimentos. No desprende sustancias nocivas para el entorno, totalmente apto para el contacto con alimentos.



Stain-resistant. Does not stain when in contact with acids such as lemon or with cleaning products such as bleach or ammonia.

Resistente a las manchas. No se mancha al contacto con ácidos como el limón o productos de limpieza, como lejía o amoníaco.

Packaging list

Lista de packaging

SIZES / FORMATOS

THICKNESS ESPESOR	*3200 x 1600 mm 126" x 63"	3200 x 1600 mm 126" x 63"	*3000 x 1000 mm 118" x 39,4"	3000 x 1000 mm 118" x 39,4"	1600 x 1600 mm 63" x 63"	800 x 1600 mm 31,4" x 63"	1500 x 1000 mm 59" x 39,4"	1000 x 1000 mm 39,4" x 39,4"	500 x 1000 mm 19,7" x 39,4"
3 mm / 0,12"	-	-	●	●	-	-	●	●	●
3+ mm / +0,12"	-	-	●	●	-	-	●	●	●
5 mm / 0,20"	-	-	●	●	-	-	●	●	●
5+ mm / +0,20"	-	-	●	●	-	-	●	●	●
6 mm / 0,24"	●	●	-	-	●	●	-	-	-
12 mm / +0,47"	●	●	-	-	-	-	-	-	-
20 mm / 0,79"	●	●	-	-	-	-	-	-	-

*Creces / Creces

TECHLAM LOADING CAPACITY 0,24", 0,47", 0,79". A-FRAME (METAL)
CAPACIDADES DE CARGA TECHLAM 6 mm, 12 mm y 20 mm. A-FRAME (METAL)

Technical Information Información Técnica	U.M.	6 mm 0,24"	12 mm 0,47"	20 mm 0,79"
Slab Surface área / Superficie tabla	m ²	5,28 (56.80 SqFt)	5,28 (56.80 SqFt)	5,28 (56.80 SqFt)
SU slab Surface / Superficie tabla SU	m ²	5,12 (55 SqFt)	5,12 (55 SqFt)	5,12 (55 SqFt)
Slab weight / Peso por m ²	kg	76,46 (168.56 lbs)	152,91 (337.11 lbs)	254,84 (561.83 lbs)
Weight per m ² / Peso por m ²	-	14,93 (32.91 lbs)	29,865 (65.84 lbs)	49,77 (89.88 lbs)
Slabs per A-Frame / Losas por caballete	ud	44	22	14
m ² per A-Frame / m ² per A-Frame	nr	232,32 (2500 SqFt)	116,16 (1250.33 SqFt)	63,36 (682 SqFt)
m ² per SU A-Frame / m ² por caballete SU	m ²	225,28 (2424.89 SqFt)	112,64 (1212.44 SqFt)	71,68 (771.55 SqFt)
Metal A-Frame weight / Peso de caballete de metal	kg	135 (297.62 lbs)	135 (297.62 lbs)	135 (297.62 lbs)
A-Frame dimensions including packaging Medidas caballete incluido embalaje	mm	3.500 (7,716.17 lbs)	3.500 (7,716.18 lbs)	3.700 (7,054.79 lbs)

WOOD BUNDLE / CABALLETE DE MADERA

A-FRAME METAL / CABALLETE DE METAL



TECHLAM LOADING CAPACITY 0,24", 0,47", 0,79". BUNDLE (WOOD)
CAPACIDADES DE CARGA TECHLAM 6 mm, 12 mm y 20 mm. BUNDLE (MADERA)

Technical Information Información Técnica	U.M.	6 mm 0,24"	12 mm 0,47"	20 mm 0,79"
Slab Surface área / Superficie tabla	m ²	5,28 (56.80 SqFt)	5,28 (56.80 SqFt)	5,28 (56.80 SqFt)
SU slab Surface / Superficie tabla SU	m ²	5,12 (55 SqFt)	5,12 (55 SqFt)	5,12 (55 SqFt)
Slab weight / Peso por m ²	kg	76,46 (168.56 lbs)	152,91 (337.11 lbs)	254,84 (561.83 lbs)
Weight per m ² / Peso por m ²	-	14,93 (32.91 lbs)	29,865 (65.84 lbs)	49,77 (89.88 lbs)
Slabs per Bundle / Tablas por caballete	ud	34	20	12
m ² per Bundle / m ² por caballete	nr	179,52 (1932 SqFt)	105,60 (1137 SqFt)	63,36 (682 SqFt)
m ² per SU Bundle / m ² por caballete SU	m ²	174,08 (1874 SqFt)	102,40 (1102 SqFt)	61,44 (663.49 SqFt)
Bundle weight / Peso Bundle	kg	65 (143.3 lbs)	65 (143.3 lbs)	65 (143.3 lbs)
Complete Bundle weight / Peso Bundle completo	kg	3.500 (7,716.17 lbs)	3.500 (7,716.18 lbs)	3.200 (7,054.79 lbs)
Bundle dimensions including packaging Medidas Bundle incluido embalaje	mm	3.406x750x1.857 (134"x29"x73")	3.406x750x1.857 (134"x29"x73")	3.300x750x1.996 (130"x29"x79")

PACKAGING
EMBALAJE

Technical Information Información Técnica	U.M.	Truck 7 m			Semi-trailer 13 m			20 ft Container			40 ft Container			40 ft Open Top		
		6 mm 0,24"	12 mm 0,47"	20 mm 0,79"	6 mm 0,24"	12 mm 0,47"	20 mm 0,79"	6 mm 0,24"	12 mm 0,47"	20 mm 0,79"	6 mm 0,24"	12 mm 0,47"	20 mm 0,79"	6 mm 0,24"	12 mm 0,47"	20 mm 0,79"
Max. number of A-Frames that may be loaded Max. caballetes que es posible cargar	nr	6	6	6	7	7	7	3	3	3	7	7	7	7	7	7
Max. slabs in A-Frames per containe Max. tablas por contenedor con caballetes	nr	264	132	84	308	154	98	132	66	42	308	154	98	308	154	98
Max. A-Frames m ² SU m ² A-Frames Max.es SU m ²	m ²	1.351,7	675,8	430,1	1.577,0	788,5	501,8	675,8	337,9	215,0	1.577,0	788,5	501,8	1.577,0	788,5	501,8
Max. weight A-Frames with packaging Peso Max. con embalaje	kg	20.995	20.994	22.217	24.495	24.493	25.919	10.498	10.497	11.108	24.495	24.493	25.919	24.495	24.493	25.919
Limitations	-	Max. Volume	Max. Volume	Max. Volume	Max. Load*	Max. Load*	Max. Load*	Max. Volume	Max. Volume	Max. Volume	Max. Load**	Max. Load*	Max. Load*	Max. Load*	Max. Load*	Max. Load*
Optimum slabs A-Frames for 24Tn Tablas optimas para 24Tn	nr	-	-	-	302	151	91	-	-	-	302	151	91	302	151	91

Technical Information Información Técnica	U.M.	Truck 7 m			Semi-trailer 13 m			20 ft Container			40 ft Container			40 ft Open Top		
		6 mm 0,24"	12 mm 0,47"	20 mm 0,79"	6 mm 0,24"	12 mm 0,47"	20 mm 0,79"	6 mm 0,24"	12 mm 0,47"	20 mm 0,79"	6 mm 0,24"	12 mm 0,47"	20 mm 0,79"	6 mm 0,24"	12 mm 0,47"	20 mm 0,79"
Max. number of A-Frames that may be loaded Max. caballetes que es posible cargar	nr	-	-	-	-	-	-	7	7	7	-	-	-	9	8	8
Max. slabs in A-Frames per containe Max. tablas por contenedor con caballetes	nr	-	-	-	-	-	-	238	140	84	-	-	-	306	160	96
Max. A-Frames m ² SU m ² A-Frames Max.es SU m ²	m ²	-	-	-	-	-	-	1.218,6	716,8	430,1	-	-	-	1.566,7	819,2	491,5
Max. weight A-Frames with packaging Peso Max. con embalaje	kg	-	-	-	-	-	-	18.652	21.862	21.862	-	-	-	23.982	24.986	24.985
Limitations	-	-	-	-	-	-	-	Max. Volume	Max. Volume	Max. Volume	-	-	-	Max. Load*	Max. Load*	Max. Load*

TECHLAM LOADING CAPACITY, 0,12" - 0,20" / CAPACIDADES DE CARGA, 3 - 5 mm

Slab/Tile Format Formato Tabla/Baldosa	Type of packaging - Dimensions Tipo embalaje - Dimensiones	Crate weight Peso Embalaje (kg)	Thick- ness Espesor (mm)	Units per crate Unidades / m ² por cajón	Total weight per crate Peso aprox. bruto por cajón (kg)	Nº of crates 20 ft Nº palets 20 ft / m ²	Payload 20 ft Carga útil 20 ft kg	Nº of crates 40 ft Semi-trailer Nº palets 40 ft Semi-Trailer / m ²	Payload 40 ft Carga útil 40 ft Semi-trailer kg	Max Stackable Heights Max. Alturas apilables
[117" x 39,4"] (3000 x 1000 mm creces)	Horizontal Crate (127,95" x 46,06" x 18,50") Cajón Horizontal (3250 x 1170 x 470 mm)	100	3 / 3+R	50 u / 150 m ²	1.300	8 u / 1200 m ²	10.400 kg	18 u / 2.700 m ²	23.400	4
[117" x 39,4"] (3000 x 1000 mm creces)	Horizontal Crate (127,95" x 46,06" x 18,50") Cajón Horizontal (3250 x 1170 x 470 mm)	100	5 / 5+R	33 u / 99 m ²	1.400	8 u / 792 m ²	11.200 kg	17 u / 1.683 m ²	23.800	4
[39,4" x 39,4"] (1000 x 1000 mm)	Cage (45,66" x 45,66" x 24,40") Jaula de (1160 x 1160 x 620 mm)	25	3 / 3+	100 u / 100 m ²	800	30 u / 3.000 m ²	24.000 kg	30 u / 3.000 m ²	24.000	3
[39,4" x 39,4"] (1000 x 1000 mm)	Cage (45,66" x 45,66" x 24,40") Jaula de (1160 x 1160 x 620 mm)	25	5 / 5+	80 u / 80 m ²	1.000	24 u / 1.920 m ²	24.000 kg	24 u / 1.920 m ²	24.000	3
[39,4" x 19,68"] (1000 x 500 mm)	Cage (45,66" x 45,66" x 24,40") Jaula de (1160 x 1160 x 620 mm)	25	3 / 3+	200 u / 100 m ²	800	30 u / 3.000 m ²	24.000 kg	30 u / 3.000 m ²	24.000	3
[39,4" x 19,68"] (1000 x 500 mm)	Cage (45,66" x 45,66" x 24,40") Jaula de (1160 x 1160 x 620 mm)	25	5 / 5+	160 u / 80 m ²	1.000	24 u / 1.920 m ²	24.000 kg	24 u / 1.920 m ²	24.000	3
[59,05" x 39,4"] (1500 x 1000 mm)	Cage (64,96" x 45,66" x 16,53") Jaula de (1650 x 1160 x 420 mm)	25	3 / 3+	50 u / 75 m ²	700	30 u / 2.250 m ²	21.000 kg	34 u / 2.550 m ²	23.800	5
[59,05" x 39,4"] (1500 x 1000 mm)	Cage (64,96" x 45,66" x 16,53") Jaula de (1650 x 1160 x 420 mm)	25	5 / 5+	45 u / 60 m ²	700	30 u / 1.800 m ²	21.000 kg	34 u / 2.040 m ²	23.800	5



CAGE - 45,66" x 45,66" x 24,40"
JAULA - 1160 x 1160 x 620 mm



HORIZONTAL CRATE - 127,95" x 46,06" x 18,50"
CAJÓN HORIZONTAL - 3250 x 1170 x 470 mm



CAGE - 64,96" x 45,66" x 16,53"
JAULA - 1650 x 1160 x 420 mm

Required tools and materials:

Forklift with 1.20 m forks for all packaging.
*The forklift forks must be extended to 3 m to handle and load the horizontal crate on the short side

Medios necesarios:

Carretilla con palas de 1,20 m de longitud para todos los embalajes.
*Para la manipulación y carga del cajón horizontal por el lado corto es necesario un prolongador para las palas de la carretilla elevadora de 3 m de longitud.

Thickness, uses and finishes

Grososres, usos y acabados

3 mm

3 mm thick sintered stone tile. It is fixed with an improved cement-like adhesive which provides appropriate adhesion and allows a certain level of deformation. It is important that the base is perfectly flat and, if not, a selflevelling compound should be applied. It weighs 7.1 kg per sqm. TECHLAM® 3 mm provides high levels of resistance and durability. It is suitable for interior flooring and wall-covering and furniture.

Lámina porcelánica de 3 mm. Se coloca con un adhesivo cementoso mejorado que proporciona una adecuada adherencia y un cierto nivel de deformabilidad. Es importante que la base tenga planimetría perfecta, si no es así hay que aplicar un autonivelante. Su peso por m2 es de 7,1 kg. Con TECHLAM® 3 mm se obtienen unas altas prestaciones de resistencia y durabilidad. Es apto para revestimiento interior y mobiliario.

3+ mm

3 mm thick tiles are reinforced with glass fibre netting and polyurethane resin. It can be fitted using an improved resinous cement which provides adequate adherence and a certain level of deformability. The base must be perfectly flat. With uneven bases, a self-levelling product must be applied.

Lámina de 3 mm reforzada con malla de fibra de vidrio y resina de poliuretano. Se coloca con un adhesivo cementoso mejorado, que proporciona una adecuada adherencia y un cierto nivel de deformabilidad. Es importante que la base tenga planimetría perfecta, si no es así hay que aplicar un autonivelante.

5 mm

5 mm sintered stone tile. It is fixed with an improved cement-like adhesive which provides appropriate adhesion and allows a certain level of deformation. It is important that the base is perfectly flat and, if not, a self-levelling compound should be applied. It weighs 11.87 kg per sqm. TECHLAM® 5 mm provides high levels of resistance and durability. It is suitable for both paving and flooring and wall-covering and cladding.

Lámina porcelánica de 5 mm. Se coloca con un adhesivo cementoso mejorado que proporciona una adecuada adherencia y un cierto nivel de deformabilidad. Es importante que la base tenga planimetría perfecta, si no es así hay que aplicar un autonivelante. Su peso por m² es de 11,87 kg. Con TECHLAM® 5 mm se obtienen unas altas prestaciones de resistencia y durabilidad. Es apto tanto para pavimento y revestimiento interior y revestimiento exterior.

5+ mm

5 mm sintered stone tile reinforced with glass fibre netting and polyurethane resin. It is fixed with an improved cement-like adhesive which provides appropriate adhesion and allows a certain level of deformation. It is important that the base is perfectly flat and, if not, a self-levelling compound should be applied. It weighs 12,57 kg per sqm. TECHLAM® 5 mm + reinforced provides high levels of resistance and durability. It is suitable for both paving and flooring and wall-covering and cladding.

Lámina porcelánica de 5 mm + refuerzo con malla de fibra de vidrio y resina de poliuretano. Se coloca con un adhesivo cementoso mejorado que proporciona una adecuada adherencia y un cierto nivel de deformabilidad. Es importante que la base tenga planimetría perfecta, si no es así hay que aplicar un autonivelante. Su peso por m² es de 12,57 kg. Con TECHLAM® 5 mm se obtienen unas prestaciones de resistencia y durabilidad. Es apto tanto para pavimento y revestimiento interior y revestimiento exterior.

6+ mm

6 mm sintered stone tile. It is fixed with an improved cement-like adhesive which provides appropriate adhesion and allows a certain level of deformation. It is important that the base is perfectly flat and, if not, a self-levelling compound should be applied. It weighs 14.93 kg per sqm. TECHLAM® 6 mm provides high levels of resistance and durability. It is suitable for both paving and flooring and wall-covering and cladding.

Lámina porcelánica de 6 mm. Se coloca con un adhesivo cementoso mejorado que proporciona una adecuada adherencia y un cierto nivel de deformabilidad. Es importante que la base tenga planimetría perfecta, si no es así hay que aplicar un autonivelante. Su peso por m² es de 14,93 kg. Con TECHLAM® 6 mm se obtienen unas altas prestaciones de resistencia y durabilidad. Es apto tanto para pavimento y revestimiento interior y revestimiento exterior y fachada ventilada.

12 mm

12 mm slab reinforced with glass fibre netting and polyurethane resin stuck. It is used mainly for countertops, flooring and ventilated fronts with hidden anchorage or fastening points, i.e. with interior grooves for fastening to a steel or aluminium substructure.

Lámina de 12 mm reforzada con malla de fibra de vidrio y resina de poliuretano pegada. Está destinada principalmente a encimera de cocina, pavimento y fachadas ventiladas con fijación o anclaje oculto, es decir, ranuradas en su interior para que puedan ser ancladas a una subestructura de aluminio o acero.

20 mm

Slab 20mm, it is used mainly for kitchen & bath countertop and flooring high traffic.

Lámina de 20 mm. Está destinada principalmente a encimera de cocina y pavimento de alto tránsito.

USOS SEGÚN GROSORES / USE BY THICKNESS

	3 mm / 0,12"	3+ mm / +0,12"	5 mm / 0,20"	5+ mm / +0,20"	6 mm / 0,24"	12 mm / 0,47"	20 mm / 0,79"
Revestimiento interior Interior walls	●	●	●	●	●	-	-
Solado interior Interior floors	-	-	●	●	●	●	●
Fachada aplacada exterior Exterior walls	-	●	●	●	●	-	-
Solado exterior Exterior floors	-	-	-	●	●	●	●
Fachada ventilada anclaje visto Ventilated facades seen anchors	-	●	-	●	●	●	●
Fachada ventilada anclaje oculto Ventilated facades hidden anchors	-	-	●	●	●	●	●
Encimeras Countertops	-	-	-	-	●	●	●
Solado alto tránsito High transit floors	-	-	●	●	-	●	●
Revestimiento interior sobre material Refurbishment directly over existing walls	●	●	●	●	●	-	-
Rodapié Skirting	-	●	●	●	●	●	●
Paneles compuestos (aluminio, cartón yeso, madera) Composite panels (aluminium, plywood, plasterboard)	●	●	●	●	●	-	-
Solado interior sobre material Refurbishment directly over existing floors	-	●	●	●	●	-	-

TECHLAM® Green

TECHLAM® is a natural product

- It can be ground down and used in other production processes.
- The relative thinness of TECHLAM® (3 or 5mm) compared to a traditional tile (10mm) reduces the environmental impact of the production process, by using less raw materials, energy and water and also reduces transport costs.

TECHLAM® es un producto natural

- Puede molerse y reciclarse en otros procesos productivos.
- El menor grosor de TECHLAM® 3 o 5 mm en comparación con un azulejo convencional de 10 mm, contribuye a generar menores impactos ambientales en su proceso productivo, puesto que se utilizan menos materias primas y recursos energéticos e hídricos y, además, permite optimizar la carga del material por contenedor o camión.



42-94%

Product contains recycled material

Recycled material has been used as a raw material, so using TECHLAM® has the following benefits:

- The environmental impact of extracting and processing the raw materials is reduced.
- It provides a solution to the demand for products containing recycled material for sustainable construction projects. Self-declared environmental claims of the content of recycled available.



GREENGUARD Certificates

This certificate ensures that construction products for indoor use comply with strict emission limits based on tests and guidelines of the National Toxicology Program of the United States. The benefits of using TECHLAM® are:

- It improves the quality of indoor air which makes it ideal for use in enclosed spaces.
- The GOLD certificate states that TECHLAM® is an ideal material for indoor spaces particularly where children and sensitive adults spend extended periods of time, such as schools and healthcare facilities.
- It provides a solution to the demand for construction products containing recycled material for sustainable construction projects.
- It is a programme recognised by the US Green Building Council.



Member of the US Green Building Council

A non-profit organisation which oversees:

- The construction of sustainable buildings.
- The use of sustainable materials in the construction of buildings.
- The establishment of standards and criteria for the LEED certificate for sustainable construction.



The Environmental Product Declaration (EPD)

It is a type-III environmental certification that includes reliable, relevant, transparent and verified environmental information on all the environmental impacts that Techlam and natural stone can generate during their lifecycle. This Declaration is based on the EN ISO 14025:2010 International Standard and was therefore verified during the audit conducted by AENOR experts in our facilities.

Producto con contenido reciclado

En la composición del producto se ha utilizado material reciclado como materia prima, por lo que los beneficios por usar TECHLAM® son:

- Se reducen los impactos de la extracción y procesado de materias primas.
- Solución a la demanda de productos con contenido reciclado para proyectos constructivos sostenibles. Disponible la autodeclaración medioambiental del contenido en reciclado.

Certificados GREENGUARD

Estos distintivos aseguran que los productos constructivos para uso en interior cumplen límites de emisión estrictos según los ensayos y directrices del Programa Nacional de Toxicología de Estados Unidos. Las ventajas de utilizar TECHLAM® son las siguientes:

- Contribuye a mejorar la calidad del aire interior, por lo que se recomienda utilizarlo en espacios cerrados.
- Con el certificado GOLD se acredita que TECHLAM® es un material adecuado para ambientes interiores en los que, particularmente los niños y adultos sensibles, pasan mucho tiempo, como escuelas y centros sanitarios.
- Solución a la demanda de productos para proyectos constructivos sostenibles.
- Es un programa reconocido por el US Green Building Council.

Miembro del US Green Building Council

Organización sin ánimo de lucro que vela por:

- La construcción de edificios sostenibles.
- El uso de materiales sostenibles para la construcción de edificios.
- El establecimiento de los estándares y criterios del sistema de certificación LEED de construcción sostenible.

La Declaración Ambiental de Producto (DAP)

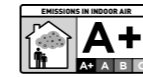
Certificado ambiental de tipo III, que incluye información ambiental fiable, relevante, transparente y verificada sobre todos los impactos ambientales que puede generar Techlam y la piedra natural durante su ciclo de vida. Esta Declaración se basa en la Norma Internacional EN ISO 14025:2010, por lo que fue verificada durante la auditoría que realizaron expertos de AENOR en nuestras instalaciones.



Certification systems for sustainable construction

Using TECHLAM® in a construction project contributes to obtaining points for the sustainable construction certificate. The best-known certification programmes internationally are:

- LEED (Leadership in Energy & Environmental Design), developed by US Green Building Council.
- BREEAM (Building Research Establishment Environmental Assessment Methodology) developed by BRE (Building Research Establishment) in the United Kingdom.



A+ Indoor Air Quality

TECHLAM® has obtained the highest classification, A+, as the levels of hazardous substances released are well below the limits in the applicable guidelines.

The benefits of using TECHLAM® are:

- It protects environmental quality in enclosed spaces and improves levels of comfort and wellbeing for installers, occupants and users.
- It provides a solution to the demand for products for sustainable construction projects.
- It complies with the French Government Regulation for construction products.



EC

With the statement of EC conformity, it is thereby stated that the product that is sold conforms with the regulatory requisites of the harmonized rules or technical specifications according to the application and anticipated use of the product, in accordance with European Regulation on Construction Products (EU) No. 305/2011.



ASTM

ASTM (American Society for Testing and Materials) is the institution that is in charge of developing the law on the testing and characterization of materials in the United States, thereby establishing the minimum requisites for the uses anticipated for each material.



ISO 9001

The ISO 9001 Quality Certificate confirms the successful implementation of a new quality management system in the TECHLAM® factory.



AIDIMA Quality Symbol

TECHLAM® has obtained the Quality Symbol by The Technology Institute on Furniture, Wood and Packaging (AIDIMA), certifying this thin ceramic tile as a suitable product for its use in the furniture manufacture.



CCC Certificate

The China Compulsory Certification (CCC) is a compulsory safety mark granted by Certification and Accreditation Administration of the People's Republic of China (CNCA) for the marketing of products in China.



SASO Quality Mark

Quality Mark is the Saudi conformity mark for products that are eligible for sale in Saudi Arabia. This quality mark demonstrates compliance with SASO standards and the implementation of an effective quality management and continuous improvement system.

Sistemas de certificación de construcción sostenible

El uso de TECHLAM® en un proyecto constructivo sirve para obtener los puntos que lo certifican como construcción sostenible. Los programas de certificación más reconocidos internacionalmente son:

- LEED (Leadership in Energy & Environmental Design), desarrollado por el US Green Building Council.
- BREEAM (Building Research Establishment Environmental Assessment Methodology) desarrollado por la BRE (Building Research Establishment) en el Reino Unido.

A+ Emisiones en el aire interior

El producto TECHLAM® ha obtenido la máxima categoría A+, al emitir niveles de sustancias peligrosas muy por debajo de los límites de la normativa de aplicación. Las ventajas de usar TECHLAM® son las siguientes:

- Se conserva la calidad del ambiente en espacios cerrados para mayor comodidad y bienestar para los instaladores, ocupantes y usuarios.
- Solución a la demanda de productos para proyectos constructivos sostenibles.
- Cumplimiento del reglamento del gobierno francés para productos de construcción.

CE

Con la declaración de conformidad CE se declara que el producto que se comercializa es conforme con los requisitos reglamentarios de las normas armonizadas o especificaciones técnicas, según la aplicación y el uso previsto del producto, de acuerdo con el Reglamento Europeo de Productos de Construcción (UE) N° 305/2011.

ASTM

ASTM (American Society for Testing and Materials), es la institución que se encarga del desarrollo de la normativa de ensayo y caracterización de los materiales en Estados Unidos, estableciendo requisitos mínimos para los usos previstos de cada material.

ISO 9001

La obtención de la certificación ISO 9001 confirma la exitosa implantación de un nuevo sistema de gestión de calidad en la planta de fabricación de TECHLAM®.

Símbolo de calidad AIDIMA

El Instituto Tecnológico del mueble, la madera, el embalaje y afines (AIDIMA) ha certificado a TECHLAM® con su Símbolo de Calidad, acreditándolo como material idóneo para su uso en la fabricación de mobiliario.

Certificado CCC

China Compulsory Certification (CCC) es una marca de seguridad obligatoria otorgada por Certification and Accreditation Administration of the People's Republic of China (CNCA) para la comercialización de productos en China.

SASO Quality Mark

Quality Mark es la marca de conformidad saudí que se otorga a los productos que son aptos para su venta en Arabia Saudí. Esta marca de calidad demuestra el cumplimiento de las normas SASO y la implementación de un sistema de gestión de calidad y mejora continua eficaz.

LEVANTINA

THE STONE COMPANY

ASIA BRANCH HONG KONG

Room 18, Unit B, 11/F
Cheung Wah Industrial building
10-12 Shipyard Lane
Quarry Bay, Hong Kong
techlam.asia@levantina.com

LEVANTINA HQ

Autivia Madrid-Alicante, s/n
030660 Novelda (Alicante) Spain
www.levantina.com



TECHLAM
by LEVANTINA

SINTERED STONE SURFACES